

DATASHEET

INVS Rabbit Polyclonal Antibody

CAT. NO. APA13894

KEY FEATURES

Target	INVS	Source / Host	Rabbit
Reactivity	Human, Mouse	Clonality	Polyclonal
Applications	WB	Conjugation	Unconjugated
Form / Buffer	Liquid in 0.42% Potassium phosphate, 0.87% Sodium chloride, pH 7.3, 30% glycerol, and 0.01% sodium azide.		Storage at -20°C

BACKGROUND

Required for normal renal development and establishment of left-right axis. Probably acts as a molecular switch between different Wnt signaling pathways. Inhibits the canonical Wnt pathway by targeting cytoplasmic disheveled (DVL1) for degradation by the ubiquitin-proteasome. This suggests that it is required in renal development to oppose the repression of terminal differentiation of tubular epithelial cells by Wnt signaling. Involved in the organization of apical junctions in kidney cells together with NPHP1, NPHP4 and RPGRIP1L/NPHP8 . Does not seem to be strictly required for ciliogenesis .

APPLICATION

To ensure optimal assay performance, AREX recommends conducting reagent titration tailored to each testing system for optimal detection results.

WB	1:500 - 1:2000
----	----------------

*Results are sample-specific. Please refer to your local assay conditions and test parameters for reference.

PRODUCT OVERVIEW

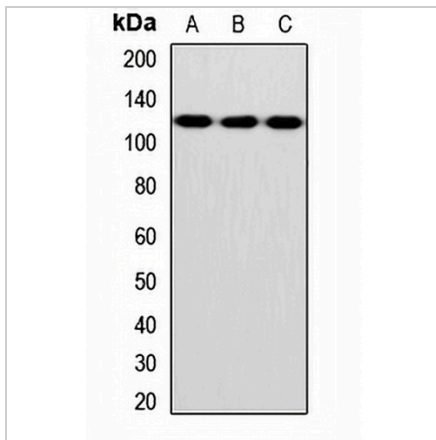
Description	Rabbit polyclonal antibody to INVS
Specificity	Recognizes endogenous levels of INVS protein.
Antibody Type	Primary antibody
Immunogen	Recombinant fusion protein of human INVS
Purification	The antibody was purified by immunogen affinity chromatography.
Molecular Weight	Predicted: 10; Observed: 120 kD
Form/Buffer	Liquid in 0.42% Potassium phosphate, 0.87% Sodium chloride, pH 7.3, 30% glycerol, and 0.01% sodium azide.
Alternative Names	INV; NPHP2; Inversin; Inversion of embryo turning homolog; Nephrocystin-2
Gene Symbol	INVS
Entrez Gene	27130(Human)
SwissProt	Q9Y283(Human); O89019(Mouse)

*AREX continuously optimizes our products. Webpage content may not reflect the latest updates. For inquiries, please contact info@arexbio.com or your local distributor.

*Clone Number, Reactivity, Source/Host and Clonality can be found in the product name and Key Features section above.

DATASHEET**INVS Rabbit Polyclonal Antibody**

CAT. NO. APA13894

DATA

Western blot analysis of INVS expression in K562 (A), mouse liver (B), mouse kidney (C) whole cell lysates. (Predicted band size: 10; 99; 117 kD; Observed band size: 120 kD)

STORAGE

Store at 4°C short term. For long term storage, store at -20°C, avoiding freeze/thaw cycles.

NOTE

For Research Use Only. Not for diagnostic, therapeutics, prophylactic or in vivo use.