

DATASHEET

BANK1 Rabbit Polyclonal Antibody

CAT. NO. APA13897

KEY FEATURES

Target	BANK1	Source / Host	Rabbit
Reactivity	Human, Mouse, Rat	Clonality	Polyclonal
Applications	WB	Conjugation	Unconjugated
Form / Buffer	Liquid in 0.42% Potassium phosphate, 0.87% Sodium chloride, pH 7.3, 30% glycerol, and 0.01% sodium azide.	Storage	at-20°C

BACKGROUND

Involved in B-cell receptor (BCR)-induced Ca(2+) mobilization from intracellular stores. Promotes Lyn-mediated phosphorylation of IP3 receptors 1 and 2.

APPLICATION

To ensure optimal assay performance, AREX recommends conducting reagent titration tailored to each testing system for optimal detection results.

WB	1:500 - 1:2000
----	----------------

*Results are sample-specific. Please refer to your local assay conditions and test parameters for reference.

PRODUCT OVERVIEW

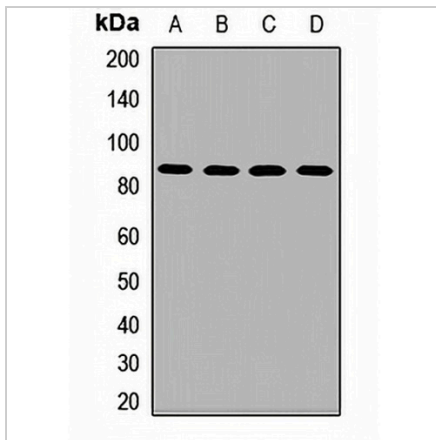
Description	Rabbit polyclonal antibody to BANK1
Specificity	Recognizes endogenous levels of BANK1 protein.
Antibody Type	Primary antibody
Immunogen	Recombinant fusion protein of human BANK1
Purification	The antibody was purified by immunogen affinity chromatography.
Molecular Weight	Predicted: 73; Observed: 89 kD
Form/Buffer	Liquid in 0.42% Potassium phosphate, 0.87% Sodium chloride, pH 7.3, 30% glycerol, and 0.01% sodium azide.
Alternative Names	B-cell scaffold protein with ankyrin repeats
Gene Symbol	BANK1
Entrez Gene	55024(Human); 242248(Mouse)
SwissProt	Q8NDB2(Human); Q80VH0(Mouse)

*AREX continuously optimizes our products. Webpage content may not reflect the latest updates. For inquiries, please contact info@arexbio.com or your local distributor.

*Clone Number, Reactivity, Source/Host and Clonality can be found in the product name and Key Features section above.

DATASHEET**BANK1 Rabbit Polyclonal Antibody**

CAT. NO. APA13897

DATA

Western blot analysis of BANK1 expression in A549 (A), HepG2 (B), mouse liver (C), rat liver (D) whole cell lysates. (Predicted band size: 73; 86; 88; 89 kD; Observed band size: 89 kD)

STORAGE

Store at 4°C short term. For long term storage, store at -20°C, avoiding freeze/thaw cycles.

NOTE

For Research Use Only. Not for diagnostic, therapeutics, prophylactic or in vivo use.