

DATASHEET

COG6 Rabbit Polyclonal Antibody

CAT. NO. APA13900

KEY FEATURES

Target	COG6	Source / Host	Rabbit
Reactivity	Human, Mouse, Rat	Clonality	Polyclonal
Applications	WB	Conjugation	Unconjugated
Form / Buffer	Liquid in 0.42% Potassium phosphate, 0.87% Sodium chloride, pH 7.3, 30% glycerol, and 0.01% sodium azide.		Storage at -20°C

BACKGROUND

Required for normal Golgi function.

APPLICATION

To ensure optimal assay performance, AREX recommends conducting reagent titration tailored to each testing system for optimal detection results.

WB	1:500 - 1:2000
----	----------------

*Results are sample-specific. Please refer to your local assay conditions and test parameters for reference.

PRODUCT OVERVIEW

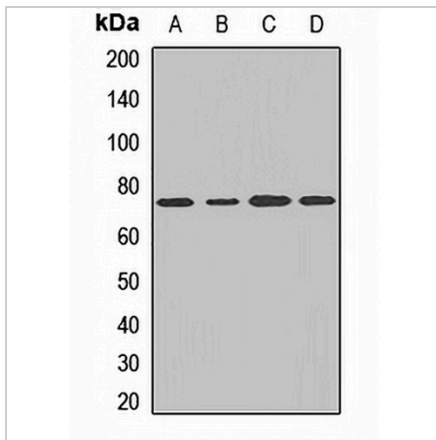
Description	Rabbit polyclonal antibody to COG6
Specificity	Recognizes endogenous levels of COG6 protein.
Antibody Type	Primary antibody
Immunogen	Recombinant fusion protein of human COG6
Purification	The antibody was purified by immunogen affinity chromatography.
Molecular Weight	Predicted: 7; Observed: 73 kD
Form/Buffer	Liquid in 0.42% Potassium phosphate, 0.87% Sodium chloride, pH 7.3, 30% glycerol, and 0.01% sodium azide.
Alternative Names	KIAA1134; Conserved oligomeric Golgi complex subunit 6; COG complex subunit 6; Component of oligomeric Golgi complex 6
Gene Symbol	COG6
Entrez Gene	57511(Human); 67542(Mouse); 310411(Rat)
SwissProt	Q9Y2V7(Human); Q8R3I3(Mouse); Q68FP9(Rat)

*AREX continuously optimizes our products. Webpage content may not reflect the latest updates. For inquiries, please contact info@arexbio.com or your local distributor.

*Clone Number, Reactivity, Source/Host and Clonality can be found in the product name and Key Features section above.

DATASHEET**COG6 Rabbit Polyclonal Antibody**

CAT. NO. APA13900

DATA

Western blot analysis of COG6 expression in Jurkat (A), A549 (B), mouse kidney (C), rat testis (D) whole cell lysates. (Predicted band size: 7; 68; 73 kD; Observed band size: 73 kD)

STORAGE

Store at 4°C short term. For long term storage, store at -20°C, avoiding freeze/thaw cycles.

NOTE

For Research Use Only. Not for diagnostic, therapeutics, prophylactic or in vivo use.