

**DATASHEET**

**LRRC4 Rabbit Polyclonal Antibody**

CAT. NO. APA13901

**KEY FEATURES**

Target	LRRC4	Source / Host	Rabbit
Reactivity	Human, Mouse, Rat	Clonality	Polyclonal
Applications	WB	Conjugation	Unconjugated
Form / Buffer	Liquid in 0.42% Potassium phosphate, 0.87% Sodium chloride, pH 7.3, 30% glycerol, and 0.01% sodium azide.		Storage at-20°C

**BACKGROUND**

Synaptic adhesion protein. Regulates the formation of excitatory synapses through the recruitment of pre-and-postsynaptic proteins. Organize the lamina/pathway-specific differentiation of dendrites. Plays an important role for auditory synaptic responses. Involved in the suppression of glioma .

**APPLICATION**

To ensure optimal assay performance, AREX recommends conducting reagent titration tailored to each testing system for optimal detection results.

WB	1:500 - 1:2000
----	----------------

\*Results are sample-specific. Please refer to your local assay conditions and test parameters for reference.

**PRODUCT OVERVIEW**

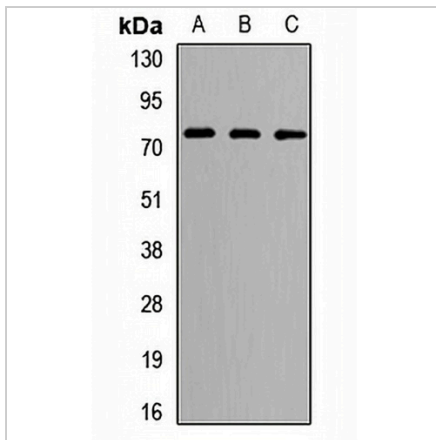
Description	Rabbit polyclonal antibody to LRRC4
Specificity	Recognizes endogenous levels of LRRC4 protein.
Antibody Type	Primary antibody
Immunogen	Recombinant fusion protein of human LRRC4
Purification	The antibody was purified by immunogen affinity chromatography.
Molecular Weight	Predicted: 72 kD; Observed: 73 kD
Form/Buffer	Liquid in 0.42% Potassium phosphate, 0.87% Sodium chloride, pH 7.3, 30% glycerol, and 0.01% sodium azide.
Alternative Names	BAG; Leucine-rich repeat-containing protein 4; Brain tumor-associated protein BAG; Nasopharyngeal carcinoma-associated gene 14 protein; Netrin-G2 ligand; NGL-2
Gene Symbol	LRRC4
Entrez Gene	64101(Human); 192198(Mouse); 641521(Rat)
SwissProt	Q9HBW1(Human); Q99PH1(Mouse); Q45R42(Rat)

\*AREX continuously optimizes our products. Webpage content may not reflect the latest updates. For inquiries, please contact [info@arexbio.com](mailto:info@arexbio.com) or your local distributor.

\*Clone Number, Reactivity, Source/Host and Clonality can be found in the product name and Key Features section above.

**DATASHEET****LRRC4 Rabbit Polyclonal Antibody**

CAT. NO. APA13901

**DATA**

Western blot analysis of LRRC4 expression in K562 (A), mouse brain (B), rat liver (C) whole cell lysates. (Predicted band size: 72 kD; Observed band size: 73 kD)

**STORAGE**

Store at 4°C short term. For long term storage, store at -20°C, avoiding freeze/thaw cycles.

**NOTE**

For Research Use Only. Not for diagnostic, therapeutics, prophylactic or in vivo use.