

## DATASHEET

# Contactin 4 Rabbit Polyclonal Antibody

CAT. NO. APA13906

### KEY FEATURES

Target	Contactin 4	Source / Host	Rabbit
Reactivity	Human	Clonality	Polyclonal
Applications	WB	Conjugation	Unconjugated
Form / Buffer	Liquid in 0.42% Potassium phosphate, 0.87% Sodium chloride, pH 7.3, 30% glycerol, and 0.01% sodium azide.		Storage at -20°C

### BACKGROUND

Contactins mediate cell surface interactions during nervous system development. Has some neurite outgrowth-promoting activity. May be involved in synaptogenesis.

### APPLICATION

To ensure optimal assay performance, AREX recommends conducting reagent titration tailored to each testing system for optimal detection results.

WB	1:500 - 1:2000
----	----------------

\*Results are sample-specific. Please refer to your local assay conditions and test parameters for reference.

### PRODUCT OVERVIEW

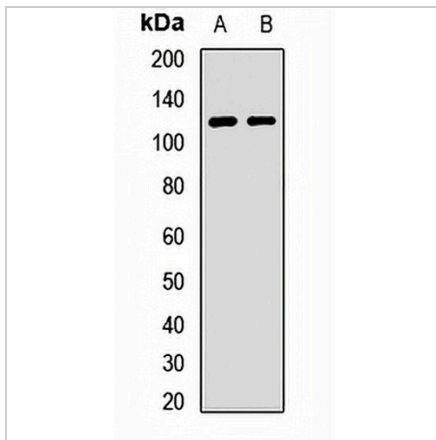
Description	Rabbit polyclonal antibody to Contactin 4
Specificity	Recognizes endogenous levels of Contactin 4 protein.
Antibody Type	Primary antibody
Immunogen	Recombinant fusion protein of human Contactin 4
Purification	The antibody was purified by immunogen affinity chromatography.
Molecular Weight	Predicted: 31; Observed: 113 kD
Form/Buffer	Liquid in 0.42% Potassium phosphate, 0.87% Sodium chloride, pH 7.3, 30% glycerol, and 0.01% sodium azide.
Alternative Names	Contactin-4; Brain-derived immunoglobulin superfamily protein 2; BIG-2
Gene Symbol	CNTN4
Entrez Gene	152330(Human)
SwissProt	Q8IWW2(Human)

\*AREX continuously optimizes our products. Webpage content may not reflect the latest updates. For inquiries, please contact [info@arexbio.com](mailto:info@arexbio.com) or your local distributor.

\*Clone Number, Reactivity, Source/Host and Clonality can be found in the product name and Key Features section above.

**DATASHEET****Contactin 4 Rabbit Polyclonal Antibody**

CAT. NO. APA13906

**DATA**

Western blot analysis of Contactin 4 expression in HeLa (A), HT1080 (B) whole cell lysates. (Predicted band size: 31; 76; 113 kD; Observed band size: 113 kD)

**STORAGE**

Store at 4°C short term. For long term storage, store at -20°C, avoiding freeze/thaw cycles.

**NOTE**

For Research Use Only. Not for diagnostic, therapeutics, prophylactic or in vivo use.