

DATASHEET

NOL14 Rabbit Polyclonal Antibody

CAT. NO. APA13911

KEY FEATURES

Target	NOL14	Source / Host	Rabbit
Reactivity	Human, Mouse	Clonality	Polyclonal
Applications	WB	Conjugation	Unconjugated
Form / Buffer	Liquid in 0.42% Potassium phosphate, 0.87% Sodium chloride, pH 7.3, 30% glycerol, and 0.01% sodium azide.		Storage at-20°C

BACKGROUND

Involved in nucleolar processing of pre-18S ribosomal RNA. Has a role in the nuclear export of 40S pre-ribosomal subunit to the cytoplasm .

APPLICATION

To ensure optimal assay performance, AREX recommends conducting reagent titration tailored to each testing system for optimal detection results.

WB	1:500 - 1:2000
----	----------------

*Results are sample-specific. Please refer to your local assay conditions and test parameters for reference.

PRODUCT OVERVIEW

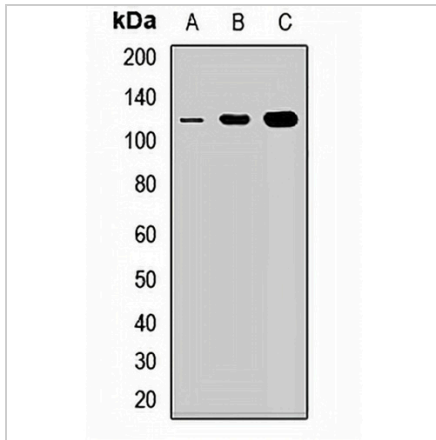
Description	Rabbit polyclonal antibody to NOL14
Specificity	Recognizes endogenous levels of NOL14 protein.
Antibody Type	Primary antibody
Immunogen	Recombinant fusion protein of human NOL14
Purification	The antibody was purified by immunogen affinity chromatography.
Molecular Weight	Predicted: 91; Observed: 115 kD
Form/Buffer	Liquid in 0.42% Potassium phosphate, 0.87% Sodium chloride, pH 7.3, 30% glycerol, and 0.01% sodium azide.
Alternative Names	C4orf9; NOL14; Nucleolar protein 14; Nucleolar complex protein 14
Gene Symbol	NOP14
Entrez Gene	8602(Human); 75416(Mouse)
SwissProt	P78316(Human); Q8R3N1(Mouse)

*AREX continuously optimizes our products. Webpage content may not reflect the latest updates. For inquiries, please contact info@arexbio.com or your local distributor.

*Clone Number, Reactivity, Source/Host and Clonality can be found in the product name and Key Features section above.

DATASHEET**NOL14 Rabbit Polyclonal Antibody**

CAT. NO. APA13911

DATA

Western blot analysis of NOL14 expression in HT29 (A), Jurkat (B), MCF7 (C) whole cell lysates. (Predicted band size: 91; 97 kD; Observed band size: 115 kD)

STORAGE

Store at 4°C short term. For long term storage, store at -20°C, avoiding freeze/thaw cycles.

NOTE

For Research Use Only. Not for diagnostic, therapeutics, prophylactic or in vivo use.