

## DATASHEET

# INPP1 Rabbit Polyclonal Antibody

CAT. NO. APA13915

### KEY FEATURES

Target	INPP1	Source / Host	Rabbit
Reactivity	Human, Mouse	Clonality	Polyclonal
Applications	WB	Conjugation	Unconjugated
Form / Buffer	Liquid in 0.42% Potassium phosphate, 0.87% Sodium chloride, pH 7.3, 30% glycerol, and 0.01% sodium azide.		Storage at -20°C

### BACKGROUND

Mg(2+)-dependent phosphatase that catalyzes the hydrolysis of the 1-position phosphate from inositol 1,4-bisphosphate and inositol 1,3,4-trisphosphate and participates in inositol phosphate metabolism.

### APPLICATION

To ensure optimal assay performance, AREX recommends conducting reagent titration tailored to each testing system for optimal detection results.

WB	1:500 - 1:2000
----	----------------

\*Results are sample-specific. Please refer to your local assay conditions and test parameters for reference.

### PRODUCT OVERVIEW

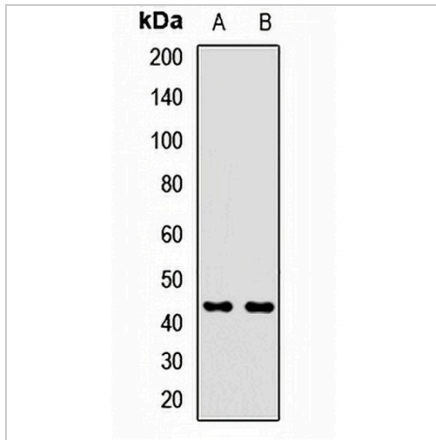
Description	Rabbit polyclonal antibody to INPP1
Specificity	Recognizes endogenous levels of INPP1 protein.
Antibody Type	Primary antibody
Immunogen	Recombinant fusion protein of human INPP1
Purification	The antibody was purified by immunogen affinity chromatography.
Molecular Weight	Predicted: 43 kD; Observed: 44 kD
Form/Buffer	Liquid in 0.42% Potassium phosphate, 0.87% Sodium chloride, pH 7.3, 30% glycerol, and 0.01% sodium azide.
Alternative Names	Inositol polyphosphate 1-phosphatase; IPP; IPPase
Gene Symbol	INPP1
Entrez Gene	3628(Human); 16329(Mouse)
SwissProt	P49441(Human); P49442(Mouse)

\*AREX continuously optimizes our products. Webpage content may not reflect the latest updates. For inquiries, please contact [info@arexbio.com](mailto:info@arexbio.com) or your local distributor.

\*Clone Number, Reactivity, Source/Host and Clonality can be found in the product name and Key Features section above.

**DATASHEET****INPP1 Rabbit Polyclonal Antibody**

CAT. NO. APA13915

**DATA**

Western blot analysis of INPP1 expression in HT29 (A), HeLa (B) whole cell lysates. (Predicted band size: 43 kD; Observed band size: 44 kD)

**STORAGE**

Store at 4°C short term. For long term storage, store at -20°C, avoiding freeze/thaw cycles.

**NOTE**

For Research Use Only. Not for diagnostic, therapeutics, prophylactic or in vivo use.