

DATASHEET

Cytokeratin 2 Rabbit Polyclonal Antibody

CAT. NO. APA13916

KEY FEATURES

Target	Cytokeratin 2	Source / Host	Rabbit
Reactivity	Human, Mouse, Rat	Clonality	Polyclonal
Applications	WB	Conjugation	Unconjugated
Form / Buffer	Liquid in 0.42% Potassium phosphate, 0.87% Sodium chloride, pH 7.3, 30% glycerol, and 0.01% sodium azide.		Storage at-20°C

BACKGROUND

Probably contributes to terminal cornification . Associated with keratinocyte activation, proliferation and keratinization . Required for maintenance of corneocytes and keratin filaments in suprabasal keratinocytes in the epidermis of the ear, potentially via moderation of expression and localization of keratins and their partner proteins . Plays a role in the establishment of the epidermal barrier on plantar skin .

APPLICATION

To ensure optimal assay performance, AREX recommends conducting reagent titration tailored to each testing system for optimal detection results.

WB	1:500 - 1:2000
----	----------------

*Results are sample-specific. Please refer to your local assay conditions and test parameters for reference.

PRODUCT OVERVIEW

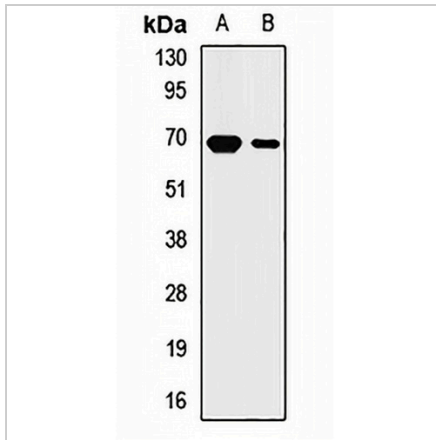
Description	Rabbit polyclonal antibody to Cytokeratin 2
Specificity	Recognizes endogenous levels of Cytokeratin 2 protein.
Antibody Type	Primary antibody
Immunogen	Recombinant fusion protein of human Cytokeratin 2
Purification	The antibody was purified by immunogen affinity chromatography.
Molecular Weight	Predicted: 65 kD; Observed: 65 kD
Form/Buffer	Liquid in 0.42% Potassium phosphate, 0.87% Sodium chloride, pH 7.3, 30% glycerol, and 0.01% sodium azide.
Alternative Names	KRT2A; KRT2E; Keratin, type II cytoskeletal 2 epidermal; Cytokeratin-2e; CK-2e; Epithelial keratin-2e; Keratin-2 epidermis; Keratin-2e; K2e; Type-II keratin Kb2
Gene Symbol	KRT2
Entrez Gene	3849(Human); 16681(Mouse); 406228(Rat)
SwissProt	P35908(Human); Q3TTY5(Mouse); Q6IG02(Rat)

*AREX continuously optimizes our products. Webpage content may not reflect the latest updates. For inquiries, please contact info@arexbio.com or your local distributor.

*Clone Number, Reactivity, Source/Host and Clonality can be found in the product name and Key Features section above.

DATASHEET**Cytokeratin 2 Rabbit Polyclonal Antibody**

CAT. NO. APA13916

DATA

Western blot analysis of Cytokeratin 2 expression in HeLa (A), mouse liver (B) whole cell lysates. (Predicted band size: 65 kD; Observed band size: 65 kD)

STORAGE

Store at 4°C short term. For long term storage, store at -20°C, avoiding freeze/thaw cycles.

NOTE

For Research Use Only. Not for diagnostic, therapeutics, prophylactic or in vivo use.