

**DATASHEET**

**ENT3 Rabbit Polyclonal Antibody**

CAT. NO. APA13917

**KEY FEATURES**

Target	ENT3	Source / Host	Rabbit
Reactivity	Human, Mouse, Rat	Clonality	Polyclonal
Applications	WB	Conjugation	Unconjugated
Form / Buffer	Liquid in 0.42% Potassium phosphate, 0.87% Sodium chloride, pH 7.3, 30% glycerol, and 0.01% sodium azide.		Storage at -20°C

**BACKGROUND**

Uniporter that mediates the facilitative transport of nucleoside across lysosomal and mitochondrial membranes . Functions as a non-electrogenic Na(+)-independent transporter . Substrate transport is pH-dependent and enhanced under acidic condition, probably reflecting the location of the transporter in acidic intracellular compartments . Proton is not a cotransporting ion but most likely change the ionization state of the transporter which dictates transport-permissible/impermissible conformation for nucleoside translocation . May direct the nucleoside transport from lysosomes to cytosol or cytosol to mitochondria to facilitate the fundamental function of salvage synthesis of nucleic acids .

**APPLICATION**

To ensure optimal assay performance, AREX recommends conducting reagent titration tailored to each testing system for optimal detection results.

WB	1:500 - 1:2000
----	----------------

\*Results are sample-specific. Please refer to your local assay conditions and test parameters for reference.

**PRODUCT OVERVIEW**

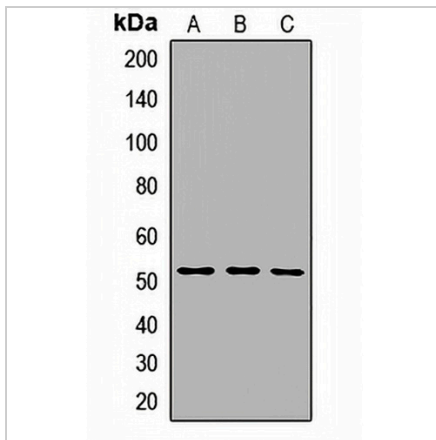
Description	Rabbit polyclonal antibody to ENT3
Specificity	Recognizes endogenous levels of ENT3 protein.
Antibody Type	Primary antibody
Immunogen	Recombinant fusion protein of human ENT3
Purification	The antibody was purified by immunogen affinity chromatography.
Molecular Weight	Predicted: 35; Observed: 50 kD
Form/Buffer	Liquid in 0.42% Potassium phosphate, 0.87% Sodium chloride, pH 7.3, 30% glycerol, and 0.01% sodium azide.
Alternative Names	ENT3; Equilibrative nucleoside transporter 3; hENT3; Solute carrier family 29 member 3
Gene Symbol	SLC29A3
Entrez Gene	55315(Human); 71279(Mouse); 353307(Rat)
SwissProt	Q9BZD2(Human); Q99P65(Mouse); Q80WK7(Rat)

\*AREX continuously optimizes our products. Webpage content may not reflect the latest updates. For inquiries, please contact [info@arexbio.com](mailto:info@arexbio.com) or your local distributor.

\*Clone Number, Reactivity, Source/Host and Clonality can be found in the product name and Key Features section above.

**DATASHEET****ENT3 Rabbit Polyclonal Antibody**

CAT. NO. APA13917

**DATA**

Western blot analysis of ENT3 expression in HeLa (A), HT29 (B), A549 (C) whole cell lysates. (Predicted band size: 35; 51 kD; Observed band size: 50 kD)

**STORAGE**

Store at 4°C short term. For long term storage, store at -20°C, avoiding freeze/thaw cycles.

**NOTE**

For Research Use Only. Not for diagnostic, therapeutics, prophylactic or in vivo use.