

DATASHEET

CHMP2A Rabbit Polyclonal Antibody

CAT. NO. APA13918

KEY FEATURES

Target	CHMP2A	Source / Host	Rabbit
Reactivity	Human, Mouse	Clonality	Polyclonal
Applications	WB	Conjugation	Unconjugated
Form / Buffer	Liquid in 0.42% Potassium phosphate, 0.87% Sodium chloride, pH 7.3, 30% glycerol, and 0.01% sodium azide.		Storage at -20°C

BACKGROUND

Probable core component of the endosomal sorting required for transport complex III (ESCRT-III) which is involved in multivesicular bodies (MVBs) formation and sorting of endosomal cargo proteins into MVBs. MVBs contain intraluminal vesicles (ILVs) that are generated by invagination and scission from the limiting membrane of the endosome and mostly are delivered to lysosomes enabling degradation of membrane proteins, such as stimulated growth factor receptors, lysosomal enzymes and lipids. The MVB pathway appears to require the sequential function of ESCRT-O, -I, -II and -III complexes. ESCRT-III proteins mostly dissociate from the invaginating membrane before the ILV is released.

APPLICATION

To ensure optimal assay performance, AREX recommends conducting reagent titration tailored to each testing system for optimal detection results.

WB	1:500 - 1:2000
----	----------------

*Results are sample-specific. Please refer to your local assay conditions and test parameters for reference.

PRODUCT OVERVIEW

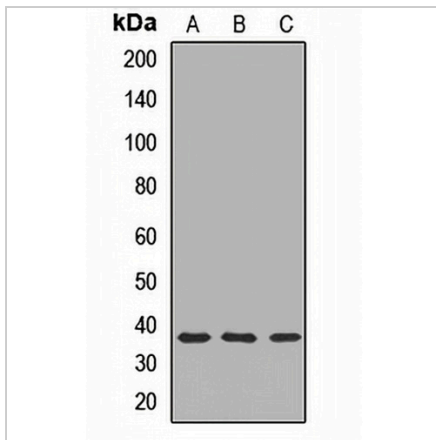
Description	Rabbit polyclonal antibody to CHMP2A
Specificity	Recognizes endogenous levels of CHMP2A protein.
Antibody Type	Primary antibody
Immunogen	Recombinant fusion protein of human CHMP2A
Purification	The antibody was purified by immunogen affinity chromatography.
Molecular Weight	Predicted: 25 kD; Observed: 37 kD
Form/Buffer	Liquid in 0.42% Potassium phosphate, 0.87% Sodium chloride, pH 7.3, 30% glycerol, and 0.01% sodium azide.
Alternative Names	BC2; CHMP2; Charged multivesicular body protein 2a; Chromatin-modifying protein 2a; CHMP2a; Putative breast adenocarcinoma marker BC-2; Vacuolar protein sorting-associated protein 2-1; Vps2-1; hVps2-1
Gene Symbol	CHMP2A
Entrez Gene	27243(Human); 68953(Mouse)
SwissProt	O43633(Human); Q9DB34(Mouse)

*AREX continuously optimizes our products. Webpage content may not reflect the latest updates. For inquiries, please contact info@arexbio.com or your local distributor.

*Clone Number, Reactivity, Source/Host and Clonality can be found in the product name and Key Features section above.

DATASHEET**CHMP2A Rabbit Polyclonal Antibody**

CAT. NO. APA13918

DATA

Western blot analysis of CHMP2A expression in A431 (A), HepG2 (B), SW480 (C) whole cell lysates. (Predicted band size: 25 kD; Observed band size: 37 kD)

STORAGE

Store at 4°C short term. For long term storage, store at -20°C, avoiding freeze/thaw cycles.

NOTE

For Research Use Only. Not for diagnostic, therapeutics, prophylactic or in vivo use.