

DATASHEET

CNDP2 Rabbit Polyclonal Antibody

CAT. NO. APA13919

KEY FEATURES

Target	CNDP2	Source / Host	Rabbit
Reactivity	Human	Clonality	Polyclonal
Applications	WB	Conjugation	Unconjugated
Form / Buffer	Liquid in 0.42% Potassium phosphate, 0.87% Sodium chloride, pH 7.3, 30% glycerol, and 0.01% sodium azide.		Storage at -20°C

BACKGROUND

Catalyzes the peptide bond hydrolysis in dipeptides, displaying a non-redundant activity toward threonyl dipeptides . Mediates threonyl dipeptide catabolism in a tissue-specific way . Has high dipeptidase activity toward cysteinylglycine, an intermediate metabolite in glutathione metabolism . Metabolizes N-lactoyl-amino acids, both through hydrolysis to form lactic acid and amino acids, as well as through their formation by reverse proteolysis . Plays a role in the regulation of cell cycle arrest and apoptosis .

APPLICATION

To ensure optimal assay performance, AREX recommends conducting reagent titration tailored to each testing system for optimal detection results.

WB	1:500 - 1:2000
----	----------------

*Results are sample-specific. Please refer to your local assay conditions and test parameters for reference.

PRODUCT OVERVIEW

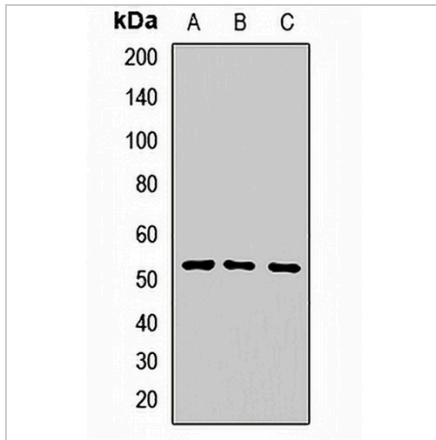
Description	Rabbit polyclonal antibody to CNDP2
Specificity	Recognizes endogenous levels of CNDP2 protein.
Antibody Type	Primary antibody
Immunogen	Recombinant fusion protein of human CNDP2
Purification	The antibody was purified by immunogen affinity chromatography.
Molecular Weight	Predicted: 43; Observed: 53 kD
Form/Buffer	Liquid in 0.42% Potassium phosphate, 0.87% Sodium chloride, pH 7.3, 30% glycerol, and 0.01% sodium azide.
Alternative Names	CN2; CPGL; PEPA; Cytosolic non-specific dipeptidase; CNDP dipeptidase 2; Glutamate carboxypeptidase-like protein 1; Peptidase A
Gene Symbol	CNDP2
Entrez Gene	55748(Human); 66054(Mouse); 291394(Rat)
SwissProt	Q96KP4(Human); Q9D1A2(Mouse); Q6Q0N1(Rat)

*AREX continuously optimizes our products. Webpage content may not reflect the latest updates. For inquiries, please contact info@arexbio.com or your local distributor.

*Clone Number, Reactivity, Source/Host and Clonality can be found in the product name and Key Features section above.

DATASHEET**CNDP2 Rabbit Polyclonal Antibody**

CAT. NO. APA13919

DATA

Western blot analysis of CNDP2 expression in LO2 (A), mouse liver (B), rat lung (C) whole cell lysates. (Predicted band size: 43; 52 kD; Observed band size: 53 kD)

STORAGE

Store at 4°C short term. For long term storage, store at -20°C, avoiding freeze/thaw cycles.

NOTE

For Research Use Only. Not for diagnostic, therapeutics, prophylactic or in vivo use.