

DATASHEET

ERAL1 Rabbit Polyclonal Antibody

CAT. NO. APA13920

KEY FEATURES

Target	ERAL1	Source / Host	Rabbit
Reactivity	Human, Mouse, Rat	Clonality	Polyclonal
Applications	WB	Conjugation	Unconjugated
Form / Buffer	Liquid in 0.42% Potassium phosphate, 0.87% Sodium chloride, pH 7.3, 30% glycerol, and 0.01% sodium azide.		Storage at -20°C

BACKGROUND

Probable GTPase that plays a role in the mitochondrial ribosomal small subunit assembly. Specifically binds the 12S mitochondrial rRNA (12S mt-rRNA) to a 33 nucleotide section delineating the 3' terminal stem-loop region. May act as a chaperone that protects the 12S mt-rRNA on the 28S mitoribosomal subunit during ribosomal small subunit assembly.

APPLICATION

To ensure optimal assay performance, AREX recommends conducting reagent titration tailored to each testing system for optimal detection results.

WB	1:500 - 1:2000
----	----------------

*Results are sample-specific. Please refer to your local assay conditions and test parameters for reference.

PRODUCT OVERVIEW

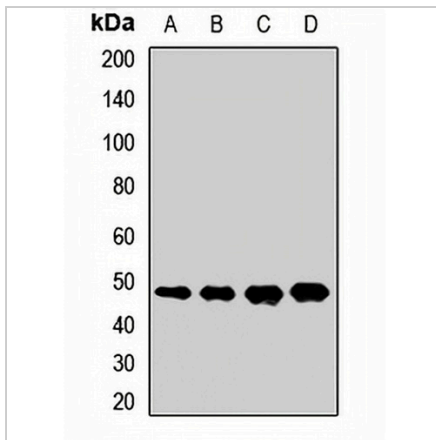
Description	Rabbit polyclonal antibody to ERAL1
Specificity	Recognizes endogenous levels of ERAL1 protein.
Antibody Type	Primary antibody
Immunogen	Recombinant fusion protein of human ERAL1
Purification	The antibody was purified by immunogen affinity chromatography.
Molecular Weight	Predicted: 30; Observed: 48 kD
Form/Buffer	Liquid in 0.42% Potassium phosphate, 0.87% Sodium chloride, pH 7.3, 30% glycerol, and 0.01% sodium azide.
Alternative Names	HERA; GTPase Era mitochondrial; H-ERA; hERA; Conserved ERA-like GTPase; CEGA; ERA-W; ERA-like protein 1
Gene Symbol	ERAL1
Entrez Gene	26284(Human); 57837(Mouse); 363646(Rat)
SwissProt	O75616(Human); Q9CZU4(Mouse); Q5EBA0(Rat)

*AREX continuously optimizes our products. Webpage content may not reflect the latest updates. For inquiries, please contact info@arexbio.com or your local distributor.

*Clone Number, Reactivity, Source/Host and Clonality can be found in the product name and Key Features section above.

DATASHEET**ERAL1 Rabbit Polyclonal Antibody**

CAT. NO. APA13920

DATA

Western blot analysis of ERAL1 expression in SKOV3 (A), HeLa (B), mouse heart (C), rat liver (D) whole cell lysates. (Predicted band size: 30; 48 kD; Observed band size: 48 kD)

STORAGE

Store at 4°C short term. For long term storage, store at -20°C, avoiding freeze/thaw cycles.

NOTE

For Research Use Only. Not for diagnostic, therapeutics, prophylactic or in vivo use.