

DATASHEET

Liprin alpha 1 Rabbit Polyclonal Antibody

CAT. NO. APA13922

KEY FEATURES

| | | | |
|---------------|---|---------------|---------------------|
| Target | Liprin alpha 1 | Source / Host | Rabbit |
| Reactivity | Human | Clonality | Polyclonal |
| Applications | WB | Conjugation | Unconjugated |
| Form / Buffer | Liquid in 0.42% Potassium phosphate, 0.87% Sodium chloride, pH 7.3, 30% glycerol, and 0.01% sodium azide. | | Storage at -20°C |

BACKGROUND

May regulate the disassembly of focal adhesions. May localize receptor-like tyrosine phosphatases type 2A at specific sites on the plasma membrane, possibly regulating their interaction with the extracellular environment and their association with substrates.

APPLICATION

To ensure optimal assay performance, AREX recommends conducting reagent titration tailored to each testing system for optimal detection results.

| | |
|----|----------------|
| WB | 1:500 - 1:1000 |
|----|----------------|

*Results are sample-specific. Please refer to your local assay conditions and test parameters for reference.

PRODUCT OVERVIEW

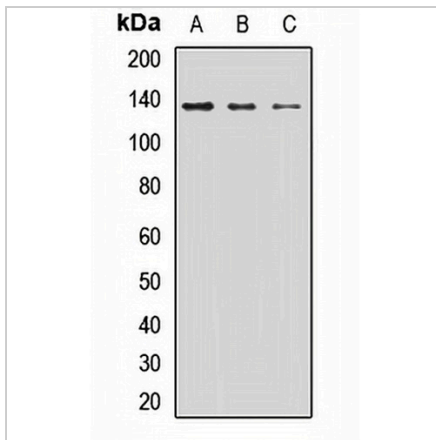
| | |
|-------------------|---|
| Description | Rabbit polyclonal antibody to Liprin alpha 1 |
| Specificity | Recognizes endogenous levels of Liprin alpha 1 protein. |
| Antibody Type | Primary antibody |
| Immunogen | Recombinant fusion protein of human Liprin alpha 1 |
| Purification | The antibody was purified by immunogen affinity chromatography. |
| Molecular Weight | Predicted: 135 kD; Observed: 136 kD |
| Form/Buffer | Liquid in 0.42% Potassium phosphate, 0.87% Sodium chloride, pH 7.3, 30% glycerol, and 0.01% sodium azide. |
| Alternative Names | LIP1; Liprin-alpha-1; LAR-interacting protein 1; LIP-1; Protein tyrosine phosphatase receptor type f polypeptide-interacting protein alpha-1; PTPRF-interacting protein alpha-1 |
| Gene Symbol | PPFIA1 |
| Entrez Gene | 8500(Human) |
| SwissProt | Q13136(Human) |

*AREX continuously optimizes our products. Webpage content may not reflect the latest updates. For inquiries, please contact info@arexbio.com or your local distributor.

*Clone Number, Reactivity, Source/Host and Clonality can be found in the product name and Key Features section above.

DATASHEET**Liprin alpha 1 Rabbit Polyclonal Antibody**

CAT. NO. APA13922

DATA

Western blot analysis of Liprin alpha 1 expression in HeLa (A), MCF7 (B), mouse kidney (C) whole cell lysates. (Predicted band size: 135 kD; Observed band size: 136 kD)

STORAGE

Store at 4°C short term. For long term storage, store at -20°C, avoiding freeze/thaw cycles.

NOTE

For Research Use Only. Not for diagnostic, therapeutics, prophylactic or in vivo use.