

DATASHEET

RAB3D Rabbit Polyclonal Antibody

CAT. NO. APA13924

KEY FEATURES

Target	RAB3D	Source / Host	Rabbit
Reactivity	Human, Mouse, Rat	Clonality	Polyclonal
Applications	WB	Conjugation	Unconjugated
Form / Buffer	Liquid in 0.42% Potassium phosphate, 0.87% Sodium chloride, pH 7.3, 30% glycerol, and 0.01% sodium azide.		Storage at -20°C

BACKGROUND

The small GTPases Rab are key regulators of intracellular membrane trafficking, from the formation of transport vesicles to their fusion with membranes. Rabs cycle between an inactive GDP-bound form and an active GTP-bound form that is able to recruit to membranes different sets of downstream effectors directly responsible for vesicle formation, movement, tethering and fusion. RAB3D may be involved in the insulin-induced exocytosis of GLUT4-containing vesicles in adipocytes.

APPLICATION

To ensure optimal assay performance, AREX recommends conducting reagent titration tailored to each testing system for optimal detection results.

WB	1:500 - 1:2000
----	----------------

*Results are sample-specific. Please refer to your local assay conditions and test parameters for reference.

PRODUCT OVERVIEW

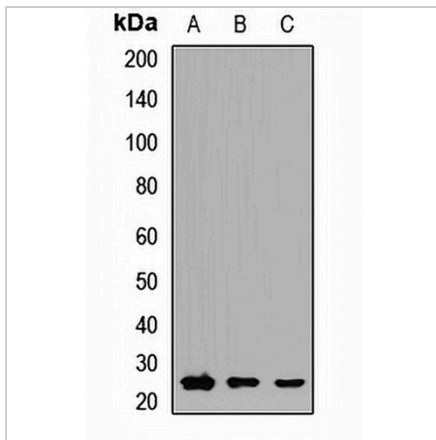
Description	Rabbit polyclonal antibody to RAB3D
Specificity	Recognizes endogenous levels of RAB3D protein.
Antibody Type	Primary antibody
Immunogen	Recombinant fusion protein of human RAB3D
Purification	The antibody was purified by immunogen affinity chromatography.
Molecular Weight	Predicted: 24 kD; Observed: 26 kD
Form/Buffer	Liquid in 0.42% Potassium phosphate, 0.87% Sodium chloride, pH 7.3, 30% glycerol, and 0.01% sodium azide.
Alternative Names	GOV; RAB16; Ras-related protein Rab-3D
Gene Symbol	RAB3D
Entrez Gene	9545(Human); 19340(Mouse); 140665(Rat)
SwissProt	O95716(Human); P35276(Mouse); Q63942(Rat)

*AREX continuously optimizes our products. Webpage content may not reflect the latest updates. For inquiries, please contact info@arexbio.com or your local distributor.

*Clone Number, Reactivity, Source/Host and Clonality can be found in the product name and Key Features section above.

DATASHEET**RAB3D Rabbit Polyclonal Antibody**

CAT. NO. APA13924

DATA

Western blot analysis of RAB3D expression in HepG2 (A), MCF7 (B), mouse lung (C) whole cell lysates. (Predicted band size: 24 kD; Observed band size: 26 kD)

STORAGE

Store at 4°C short term. For long term storage, store at -20°C, avoiding freeze/thaw cycles.

NOTE

For Research Use Only. Not for diagnostic, therapeutics, prophylactic or in vivo use.