

DATASHEET

REEP5 Rabbit Polyclonal Antibody

CAT. NO. APA13926

KEY FEATURES

Target	REEP5	Source / Host	Rabbit
Reactivity	Human, Mouse, Rat	Clonality	Polyclonal
Applications	WB	Conjugation	Unconjugated
Form / Buffer	Liquid in 0.42% Potassium phosphate, 0.87% Sodium chloride, pH 7.3, 30% glycerol, and 0.01% sodium azide.	Storage	at-20°C

BACKGROUND

Plays an essential role in heart function and development by regulating the organization and function of the sarcoplasmic reticulum in cardiomyocytes.

APPLICATION

To ensure optimal assay performance, AREX recommends conducting reagent titration tailored to each testing system for optimal detection results.

WB	1:500 - 1:2000
----	----------------

*Results are sample-specific. Please refer to your local assay conditions and test parameters for reference.

PRODUCT OVERVIEW

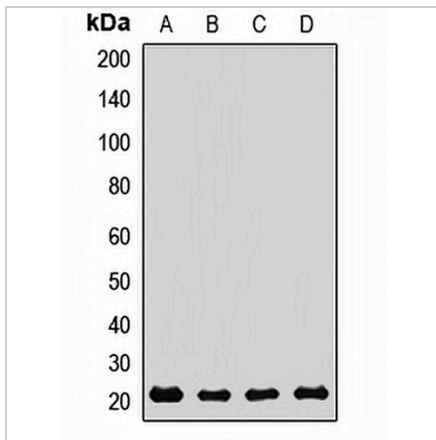
Description	Rabbit polyclonal antibody to REEP5
Specificity	Recognizes endogenous levels of REEP5 protein.
Antibody Type	Primary antibody
Immunogen	Recombinant fusion protein of human REEP5
Purification	The antibody was purified by immunogen affinity chromatography.
Molecular Weight	Predicted: 14; Observed: 21 kD
Form/Buffer	Liquid in 0.42% Potassium phosphate, 0.87% Sodium chloride, pH 7.3, 30% glycerol, and 0.01% sodium azide.
Alternative Names	C5orf18; DP1; TB2; Receptor expression-enhancing protein 5; Polyposis locus protein 1; Protein TB2
Gene Symbol	REEP5
Entrez Gene	7905(Human); 364838(Rat)
SwissProt	Q00765(Human); Q60870(Mouse); B2RZ37(Rat)

*AREX continuously optimizes our products. Webpage content may not reflect the latest updates. For inquiries, please contact info@arexbio.com or your local distributor.

*Clone Number, Reactivity, Source/Host and Clonality can be found in the product name and Key Features section above.

DATASHEET**REEP5 Rabbit Polyclonal Antibody**

CAT. NO. APA13926

DATA

Western blot analysis of REEP5 expression in A375 (A), MCF7 (B), mouse brain (C), rat heart (D) whole cell lysates. (Predicted band size: 14; 21 kD; Observed band size: 21 kD)

STORAGE

Store at 4°C short term. For long term storage, store at -20°C, avoiding freeze/thaw cycles.

NOTE

For Research Use Only. Not for diagnostic, therapeutics, prophylactic or in vivo use.