

DATASHEET

RIC8A Rabbit Polyclonal Antibody

CAT. NO. APA13927

KEY FEATURES

Target	RIC8A	Source / Host	Rabbit
Reactivity	Human	Clonality	Polyclonal
Applications	WB	Conjugation	Unconjugated
Form / Buffer	Liquid in 0.42% Potassium phosphate, 0.87% Sodium chloride, pH 7.3, 30% glycerol, and 0.01% sodium azide.		Storage at -20°C

BACKGROUND

Chaperone that specifically binds and folds nascent G alpha proteins prior to G protein heterotrimer formation, promoting their stability and activity: folds GNAI1, GNAO1, GNA13 and GNAQ . Does not fold G(s) G-alpha proteins GNAS nor GNAL . Also acts as a guanine nucleotide exchange factor (GEF) for G alpha proteins by stimulating exchange of bound GDP for free GTP . Involved in regulation of microtubule pulling forces during mitotic movement of chromosomes by stimulating G(i)-alpha protein (GNAI1), possibly leading to release G(i)-alpha-GTP and NuMA proteins from the NuMA-GPSM2-G(i)-alpha-GDP complex . Also acts as an activator for G(q)-alpha (GNAQ) protein by enhancing the G(q)-coupled receptor-mediated ERK activation G-alpha proteins GNAS nor GNAL .

APPLICATION

To ensure optimal assay performance, AREX recommends conducting reagent titration tailored to each testing system for optimal detection results.

WB	1:500 - 1:1000
----	----------------

*Results are sample-specific. Please refer to your local assay conditions and test parameters for reference.

PRODUCT OVERVIEW

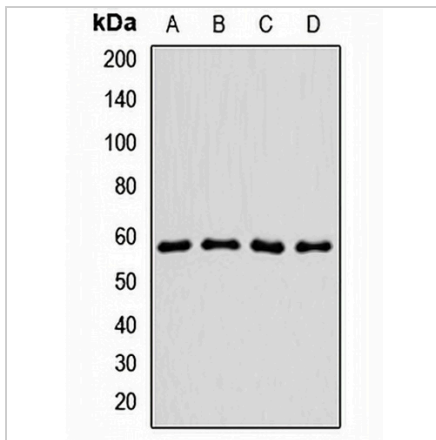
Description	Rabbit polyclonal antibody to RIC8A
Specificity	Recognizes endogenous levels of RIC8A protein.
Antibody Type	Primary antibody
Immunogen	Recombinant fusion protein of human RIC8A
Purification	The antibody was purified by immunogen affinity chromatography.
Molecular Weight	Predicted: 59 kD; Observed: 59 kD
Form/Buffer	Liquid in 0.42% Potassium phosphate, 0.87% Sodium chloride, pH 7.3, 30% glycerol, and 0.01% sodium azide.
Alternative Names	Synembryn-A; Protein Ric-8A
Gene Symbol	RIC8A
Entrez Gene	60626(Human); 101489(Mouse)
SwissProt	Q9NPQ8(Human); Q3TIR3(Mouse); Q80ZG1(Rat)

*AREX continuously optimizes our products. Webpage content may not reflect the latest updates. For inquiries, please contact info@arexbio.com or your local distributor.

*Clone Number, Reactivity, Source/Host and Clonality can be found in the product name and Key Features section above.

DATASHEET**RIC8A Rabbit Polyclonal Antibody**

CAT. NO. APA13927

DATA

Western blot analysis of RIC8A expression in HeLa (A), HepG2 (B), mouse brain (C), rat brain (D) whole cell lysates. (Predicted band size: 59 kD; Observed band size: 59 kD)

STORAGE

Store at 4°C short term. For long term storage, store at -20°C, avoiding freeze/thaw cycles.

NOTE

For Research Use Only. Not for diagnostic, therapeutics, prophylactic or in vivo use.