

DATASHEET

CORIN Rabbit Polyclonal Antibody

CAT. NO. APA13930

KEY FEATURES

Target	CORIN	Source / Host	Rabbit
Reactivity	Human, Mouse, Rat	Clonality	Polyclonal
Applications	WB	Conjugation	Unconjugated
Form / Buffer	Liquid in 0.42% Potassium phosphate, 0.87% Sodium chloride, pH 7.3, 30% glycerol, and 0.01% sodium azide.		Storage at -20°C

BACKGROUND

Serine-type endopeptidase involved in atrial natriuretic peptide (NPPA) and brain natriuretic peptide (NPPB) processing and brain natriuretic peptide (NPPB) processing . Converts through proteolytic cleavage the non-functional propeptides NPPA and NPPB into their active hormones, ANP and BNP(1-32) respectively, thereby regulating blood pressure in the heart and promoting natriuresis, diuresis and vasodilation . Proteolytic cleavage of pro-NPPA also plays a role in female pregnancy by promoting trophoblast invasion and spiral artery remodeling in uterus . Also acts as a regulator of sodium reabsorption in kidney .

APPLICATION

To ensure optimal assay performance, AREX recommends conducting reagent titration tailored to each testing system for optimal detection results.

WB	1:500 - 1:2000
----	----------------

*Results are sample-specific. Please refer to your local assay conditions and test parameters for reference.

PRODUCT OVERVIEW

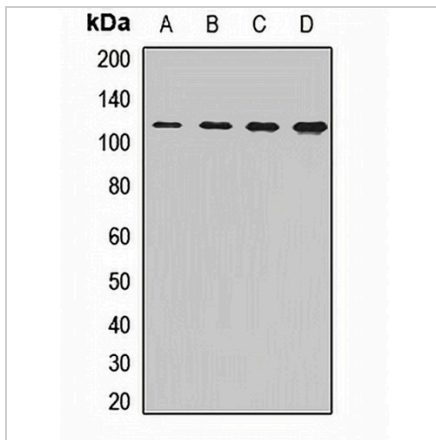
Description	Rabbit polyclonal antibody to CORIN
Specificity	Recognizes endogenous levels of CORIN protein.
Antibody Type	Primary antibody
Immunogen	Recombinant fusion protein of human CORIN
Purification	The antibody was purified by immunogen affinity chromatography.
Molecular Weight	Predicted: 113; Observed: 116 kD
Form/Buffer	Liquid in 0.42% Potassium phosphate, 0.87% Sodium chloride, pH 7.3, 30% glycerol, and 0.01% sodium azide.
Alternative Names	CRN; TMPRSS10; Atrial natriuretic peptide-converting enzyme; Corin; Heart-specific serine proteinase ATC2; Pro-ANP-converting enzyme; Transmembrane protease serine 10
Gene Symbol	CORIN
Entrez Gene	10699(Human); 53419(Mouse); 289596(Rat)
SwissProt	Q9Y5Q5(Human); Q9Z319(Mouse); Q80YN4(Rat)

*AREX continuously optimizes our products. Webpage content may not reflect the latest updates. For inquiries, please contact info@arexbio.com or your local distributor.

*Clone Number, Reactivity, Source/Host and Clonality can be found in the product name and Key Features section above.

DATASHEET**CORIN Rabbit Polyclonal Antibody**

CAT. NO. APA13930

DATA

Western blot analysis of CORIN expression in Hela (A), HT1080 (B), mouse heart (C), rat brain (D) whole cell lysates. (Predicted band size: 113; 116 kD; Observed band size: 116 kD)

STORAGE

Store at 4°C short term. For long term storage, store at -20°C, avoiding freeze/thaw cycles.

NOTE

For Research Use Only. Not for diagnostic, therapeutics, prophylactic or in vivo use.