

DATASHEET

UBE2G2 Rabbit Polyclonal Antibody

CAT. NO. APA13932

KEY FEATURES

| | | | |
|---------------|---|---------------|---------------------|
| Target | UBE2G2 | Source / Host | Rabbit |
| Reactivity | Human, Mouse, Rat | Clonality | Polyclonal |
| Applications | WB, IF/ICC | Conjugation | Unconjugated |
| Form / Buffer | Liquid in 0.42% Potassium phosphate, 0.87% Sodium chloride, pH 7.3, 30% glycerol, and 0.01% sodium azide. | | Storage at -20°C |

BACKGROUND

Accepts ubiquitin from the E1 complex and catalyzes its covalent attachment to other proteins. In vitro catalyzes 'Lys-48'-linked polyubiquitination. Involved in endoplasmic reticulum-associated degradation (ERAD). Required for sterol-induced ubiquitination of 3-hydroxy-3-methylglutaryl coenzyme A reductase and its subsequent proteasomal degradation.

APPLICATION

To ensure optimal assay performance, AREX recommends conducting reagent titration tailored to each testing system for optimal detection results.

| | |
|--------|----------------|
| WB | 1:500 - 1:2000 |
| IF/ICC | 1:50 - 1:200 |

*Results are sample-specific. Please refer to your local assay conditions and test parameters for reference.

PRODUCT OVERVIEW

| | |
|-------------------|---|
| Description | Rabbit polyclonal antibody to UBE2G2 |
| Specificity | Recognizes endogenous levels of UBE2G2 protein. |
| Antibody Type | Primary antibody |
| Immunogen | Recombinant fusion protein of human UBE2G2 |
| Purification | The antibody was purified by immunogen affinity chromatography. |
| Molecular Weight | Predicted: 15; Observed: 18 kD |
| Form/Buffer | Liquid in 0.42% Potassium phosphate, 0.87% Sodium chloride, pH 7.3, 30% glycerol, and 0.01% sodium azide. |
| Alternative Names | Ubiquitin-conjugating enzyme E2 G2; Ubiquitin carrier protein G2; Ubiquitin-protein ligase G2 |
| Gene Symbol | UBE2G2 |
| Entrez Gene | 7327(Human); 22213(Mouse) |
| SwissProt | P60604(Human); P60605(Mouse) |

*AREX continuously optimizes our products. Webpage content may not reflect the latest updates. For inquiries, please contact info@arexbio.com or your local distributor.

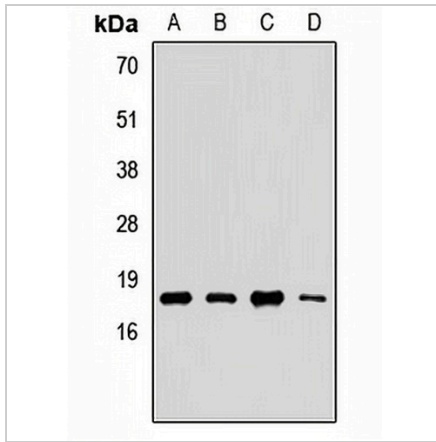
*Clone Number, Reactivity, Source/Host and Clonality can be found in the product name and Key Features section above.

DATASHEET

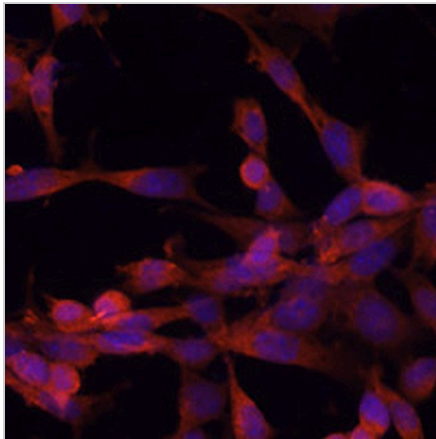
UBE2G2 Rabbit Polyclonal Antibody

CAT. NO. APA13932

DATA



Western blot analysis of UBE2G2 expression in MCF7 (A), HT1080 (B), mouse heart (C), rat testis (D) whole cell lysates. (Predicted band size: 15; 18 kD; Observed band size: 18 kD)



Immunofluorescent analysis of UBE2G2 staining in NIH3T3 cells. Formalin-fixed cells were permeabilized with 0.1% Triton X-100 in TBS for 5-10 minutes and blocked with 3% BSA-PBS for 30 minutes at room temperature. Cells were probed with the primary antibody in 3% BSA-PBS and incubated overnight at 4 °C in a humidified chamber. Cells were washed with PBST and incubated with a AREX® Fluor 594-conjugated secondary antibody (red) in PBS at room temperature in the dark. DAPI was used to stain the cell nuclei (blue).

STORAGE

Store at 4°C short term. For long term storage, store at -20°C, avoiding freeze/thaw cycles.

NOTE

For Research Use Only. Not for diagnostic, therapeutics, prophylactic or in vivo use.