

DATASHEET

TLT1 Rabbit Polyclonal Antibody

CAT. NO. APA13934

KEY FEATURES

Target	TLT1	Source / Host	Rabbit
Reactivity	Mouse, Rat	Clonality	Polyclonal
Applications	WB	Conjugation	Unconjugated
Form / Buffer	Liquid in 0.42% Potassium phosphate, 0.87% Sodium chloride, pH 7.3, 30% glycerol, and 0.01% sodium azide.		Storage at -20°C

BACKGROUND

Cell surface receptor that may play a role in the innate and adaptive immune response.

APPLICATION

To ensure optimal assay performance, AREX recommends conducting reagent titration tailored to each testing system for optimal detection results.

WB	1:500 - 1:2000
----	----------------

*Results are sample-specific. Please refer to your local assay conditions and test parameters for reference.

PRODUCT OVERVIEW

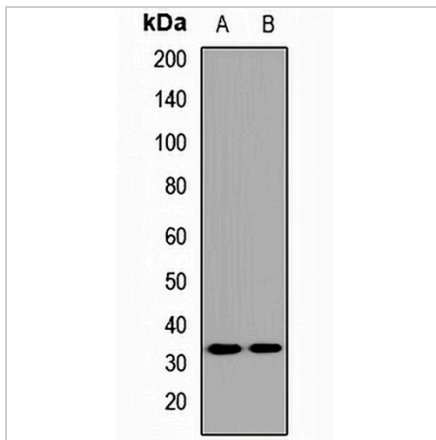
Description	Rabbit polyclonal antibody to TLT1
Specificity	Recognizes endogenous levels of TLT1 protein.
Antibody Type	Primary antibody
Immunogen	Recombinant fusion protein of human TLT1
Purification	The antibody was purified by immunogen affinity chromatography.
Molecular Weight	Predicted: 20; Observed: 33 kD
Form/Buffer	Liquid in 0.42% Potassium phosphate, 0.87% Sodium chloride, pH 7.3, 30% glycerol, and 0.01% sodium azide.
Alternative Names	TLT1; Trem-like transcript 1 protein; TLT-1; Triggering receptor expressed on myeloid cells-like protein 1
Gene Symbol	TREML1
Entrez Gene	340205(Human); 71326(Mouse)
SwissProt	Q86YW5(Human); Q8K558(Mouse)

*AREX continuously optimizes our products. Webpage content may not reflect the latest updates. For inquiries, please contact info@arexbio.com or your local distributor.

*Clone Number, Reactivity, Source/Host and Clonality can be found in the product name and Key Features section above.

DATASHEET**TLT1 Rabbit Polyclonal Antibody**

CAT. NO. APA13934

DATA

Western blot analysis of TLT1 expression in mouse lung (A), rat liver (B) whole cell lysates. (Predicted band size: 20; 21; 32 kD; Observed band size: 33 kD)

STORAGE

Store at 4°C short term. For long term storage, store at -20°C, avoiding freeze/thaw cycles.

NOTE

For Research Use Only. Not for diagnostic, therapeutics, prophylactic or in vivo use.