

DATASHEET

Collectin 12 Rabbit Polyclonal Antibody

CAT. NO. APA13936

KEY FEATURES

Target	Collectin 12	Source / Host	Rabbit
Reactivity	Human, Mouse, Rat	Clonality	Polyclonal
Applications	WB	Conjugation	Unconjugated
Form / Buffer	Liquid in 0.42% Potassium phosphate, 0.87% Sodium chloride, pH 7.3, 30% glycerol, and 0.01% sodium azide.		Storage at-20°C

BACKGROUND

Scavenger receptor that displays several functions associated with host defense. Promotes binding and phagocytosis of Gram-positive, Gram-negative bacteria and yeast. Mediates the recognition, internalization and degradation of oxidatively modified low density lipoprotein (oxLDL) by vascular endothelial cells. Binds to several carbohydrates including Gal-type ligands, D-galactose, L- and D-fucose, GalNAc, T and Tn antigens in a calcium-dependent manner and internalizes specifically GalNAc in nurse-like cells. Also binds to sialyl Lewis X or a trisaccharide and asialo-orosomucoid (ASOR). May also play a role in the clearance of amyloid-beta in Alzheimer disease.

APPLICATION

To ensure optimal assay performance, AREX recommends conducting reagent titration tailored to each testing system for optimal detection results.

WB	1:500 - 1:2000
----	----------------

*Results are sample-specific. Please refer to your local assay conditions and test parameters for reference.

PRODUCT OVERVIEW

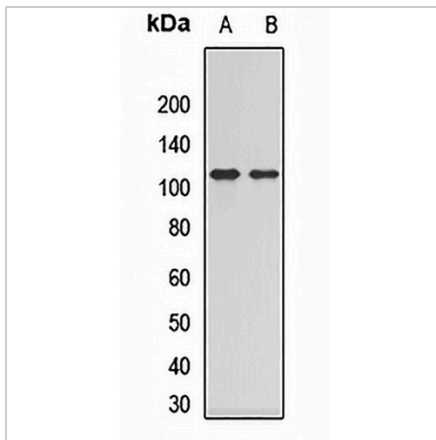
Description	Rabbit polyclonal antibody to Collectin 12
Specificity	Recognizes endogenous levels of Collectin 12 protein.
Antibody Type	Primary antibody
Immunogen	Recombinant fusion protein of human Collectin 12
Purification	The antibody was purified by immunogen affinity chromatography.
Molecular Weight	Predicted: 81 kD; Observed: 110 kD
Form/Buffer	Liquid in 0.42% Potassium phosphate, 0.87% Sodium chloride, pH 7.3, 30% glycerol, and 0.01% sodium azide.
Alternative Names	CLP1; NSR2; SCARA4; SRCL; Collectin-12; Collectin placenta protein 1; CL-P1; hCL-P1; Nurse cell scavenger receptor 2; Scavenger receptor class A member 4; Scavenger receptor with C-type lectin
Gene Symbol	COLEC12
Entrez Gene	81035(Human); 140792(Mouse); 361289(Rat)
SwissProt	Q5KU26(Human); Q8K4Q8(Mouse); Q4V885(Rat)

*AREX continuously optimizes our products. Webpage content may not reflect the latest updates. For inquiries, please contact info@arexbio.com or your local distributor.

*Clone Number, Reactivity, Source/Host and Clonality can be found in the product name and Key Features section above.

DATASHEET**Collectin 12 Rabbit Polyclonal Antibody**

CAT. NO. APA13936

DATA

Western blot analysis of Collectin 12 expression in U87 (A), HEK293T (B) whole cell lysates. (Predicted band size: 81 kD; Observed band size: 110 kD)

STORAGE

Store at 4°C short term. For long term storage, store at -20°C, avoiding freeze/thaw cycles.

NOTE

For Research Use Only. Not for diagnostic, therapeutics, prophylactic or in vivo use.