

DATASHEET

JTB Rabbit Polyclonal Antibody

CAT. NO. APA13938

KEY FEATURES

Target	JTB	Source / Host	Rabbit
Reactivity	Human, Mouse, Rat	Clonality	Polyclonal
Applications	WB	Conjugation	Unconjugated
Form / Buffer	Liquid in 0.42% Potassium phosphate, 0.87% Sodium chloride, pH 7.3, 30% glycerol, and 0.01% sodium azide.		Storage at -20°C

BACKGROUND

Required for normal cytokinesis during mitosis. Plays a role in the regulation of cell proliferation. May be a component of the chromosomal passenger complex (CPC), a complex that acts as a key regulator of mitosis. The CPC complex has essential functions at the centromere in ensuring correct chromosome alignment and segregation and is required for chromatin-induced microtubule stabilization and spindle assembly. Increases AURKB activity. Inhibits apoptosis induced by TGFβ1. Overexpression induces swelling of mitochondria and reduces mitochondrial membrane potential.

APPLICATION

To ensure optimal assay performance, AREX recommends conducting reagent titration tailored to each testing system for optimal detection results.

WB	1:500 - 1:2000
----	----------------

*Results are sample-specific. Please refer to your local assay conditions and test parameters for reference.

PRODUCT OVERVIEW

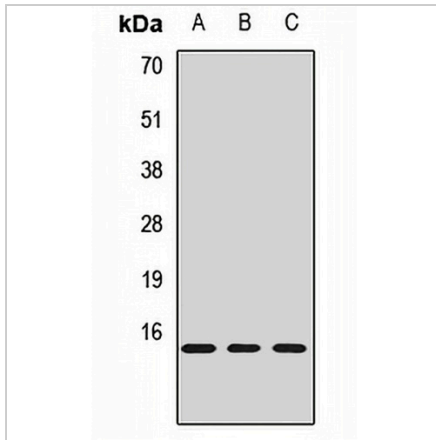
Description	Rabbit polyclonal antibody to JTB
Specificity	Recognizes endogenous levels of JTB protein.
Antibody Type	Primary antibody
Immunogen	Recombinant fusion protein of human JTB
Purification	The antibody was purified by immunogen affinity chromatography.
Molecular Weight	Predicted: 13; Observed: 15 kD
Form/Buffer	Liquid in 0.42% Potassium phosphate, 0.87% Sodium chloride, pH 7.3, 30% glycerol, and 0.01% sodium azide.
Alternative Names	Protein JTB; Jumping translocation breakpoint protein; Prostate androgen-regulated protein; PAR protein
Gene Symbol	JTB
Entrez Gene	10899(Human); 23922(Mouse); 29439(Rat)
SwissProt	O76095(Human); O88824(Mouse); O88823(Rat)

*AREX continuously optimizes our products. Webpage content may not reflect the latest updates. For inquiries, please contact info@arexbio.com or your local distributor.

*Clone Number, Reactivity, Source/Host and Clonality can be found in the product name and Key Features section above.

DATASHEET**JTB Rabbit Polyclonal Antibody**

CAT. NO. APA13938

DATA

Western blot analysis of JTB expression in MCF7 (A), A375 (B), rat spleen (C) whole cell lysates. (Predicted band size: 13; 16 kD; Observed band size: 15 kD)

STORAGE

Store at 4°C short term. For long term storage, store at -20°C, avoiding freeze/thaw cycles.

NOTE

For Research Use Only. Not for diagnostic, therapeutics, prophylactic or in vivo use.