

DATASHEET

PLB Rabbit Polyclonal Antibody

CAT. NO. APA13939

KEY FEATURES

Target	PLB	Source / Host	Rabbit
Reactivity	Human, Mouse, Rat	Clonality	Polyclonal
Applications	WB	Conjugation	Unconjugated
Form / Buffer	Liquid in 0.42% Potassium phosphate, 0.87% Sodium chloride, pH 7.3, 30% glycerol, and 0.01% sodium azide.		Storage at -20°C

BACKGROUND

Calcium-independent membrane-associated phospholipase that catalyzes complete diacylation of phospholipids by hydrolyzing both sn-1 and sn-2 fatty acyl chains attached to the glycerol backbone (phospholipase B activity). Has dual phospholipase and lysophospholipase activities toward diacylphospholipids. Preferentially cleaves sn-2 ester bonds over sn-1 bonds. Acts as a lipase toward glycerolipid substrates. Hydrolyzes fatty acyl chains of diacylglycerols with preference for the sn-2 position and of triacylglycerols with not positional selectivity. May also hydrolyze long chain retinyl esters such as retinyl palmitate. May contribute to digestion of dietary phospholipids, glycerolipids and retinoids, facilitating lipid absorption at the brush border.

APPLICATION

To ensure optimal assay performance, AREX recommends conducting reagent titration tailored to each testing system for optimal detection results.

WB	1:500 - 1:2000
----	----------------

*Results are sample-specific. Please refer to your local assay conditions and test parameters for reference.

PRODUCT OVERVIEW

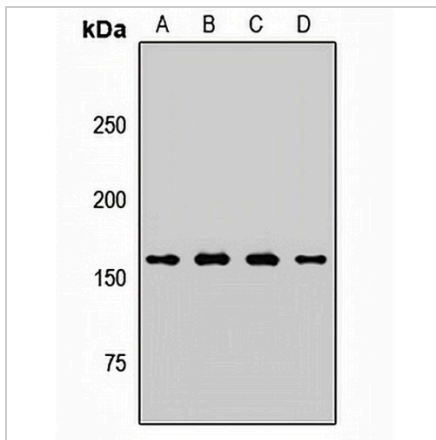
Description	Rabbit polyclonal antibody to PLB
Specificity	Recognizes endogenous levels of PLB protein.
Antibody Type	Primary antibody
Immunogen	Recombinant fusion protein of human PLB
Purification	The antibody was purified by immunogen affinity chromatography.
Molecular Weight	Predicted: 47; Observed: 170 kD
Form/Buffer	Liquid in 0.42% Potassium phosphate, 0.87% Sodium chloride, pH 7.3, 30% glycerol, and 0.01% sodium azide.
Alternative Names	PLB; Phospholipase B1, membrane-associated; Phospholipase B; hPLB; Phospholipase B/lipase; PLB/LIP
Gene Symbol	PLB1
Entrez Gene	151056(Human); 665270(Mouse); 192259(Rat)
SwissProt	Q6P1J6(Human); Q3TTY0(Mouse); O54728(Rat)

*AREX continuously optimizes our products. Webpage content may not reflect the latest updates. For inquiries, please contact info@arexbio.com or your local distributor.

*Clone Number, Reactivity, Source/Host and Clonality can be found in the product name and Key Features section above.

DATASHEET**PLB Rabbit Polyclonal Antibody**

CAT. NO. APA13939

DATA

Western blot analysis of PLB expression in A431 (A), HT29 (B), mouse lung (C), rat testis (D) whole cell lysates. (Predicted band size: 47; 54; 85; 161; 163 kD; Observed band size: 170 kD)

STORAGE

Store at 4°C short term. For long term storage, store at -20°C, avoiding freeze/thaw cycles.

NOTE

For Research Use Only. Not for diagnostic, therapeutics, prophylactic or in vivo use.