

DATASHEET

Semaphorin 4F Rabbit Polyclonal Antibody

CAT. NO. APA13940

KEY FEATURES

Target	Semaphorin 4F	Source / Host	Rabbit
Reactivity	Human, Mouse, Rat	Clonality	Polyclonal
Applications	WB, IHC	Conjugation	Unconjugated
Form / Buffer	Liquid in 0.42% Potassium phosphate, 0.87% Sodium chloride, pH 7.3, 30% glycerol, and 0.01% sodium azide.	Storage	at-20°C

BACKGROUND

Probable cell surface receptor that regulates oligodendroglial precursor cell migration . Might also regulate differentiation of oligodendroglial precursor cells . Has growth cone collapse activity against retinal ganglion-cell axons .

APPLICATION

To ensure optimal assay performance, AREX recommends conducting reagent titration tailored to each testing system for optimal detection results.

WB	1:500 - 1:2000
IHC	1:50 - 1:200

*Results are sample-specific. Please refer to your local assay conditions and test parameters for reference.

PRODUCT OVERVIEW

Description	Rabbit polyclonal antibody to Semaphorin 4F
Specificity	Recognizes endogenous levels of Semaphorin 4F protein.
Antibody Type	Primary antibody
Immunogen	Recombinant fusion protein of human Semaphorin 4F
Purification	The antibody was purified by immunogen affinity chromatography.
Molecular Weight	Predicted: 66; Observed: 83 kD
Form/Buffer	Liquid in 0.42% Potassium phosphate, 0.87% Sodium chloride, pH 7.3, 30% glycerol, and 0.01% sodium azide.
Alternative Names	SEMAM; SEMAW; Semaphorin-4F; Semaphorin-M; Sema M; Semaphorin-W; Sema W
Gene Symbol	SEMA4F
Entrez Gene	10505(Human); 20355(Mouse); 29745(Rat)
SwissProt	O95754(Human); Q9Z123(Mouse); Q9Z143(Rat)

*AREX continuously optimizes our products. Webpage content may not reflect the latest updates. For inquiries, please contact info@arexbio.com or your local distributor.

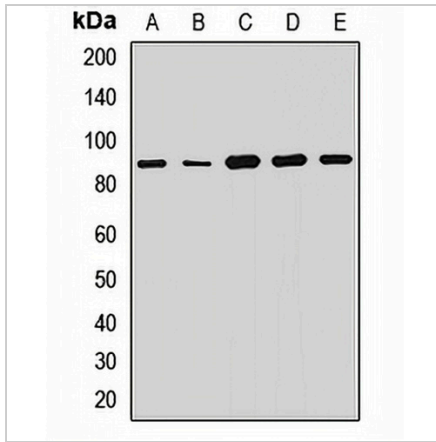
*Clone Number, Reactivity, Source/Host and Clonality can be found in the product name and Key Features section above.

DATASHEET

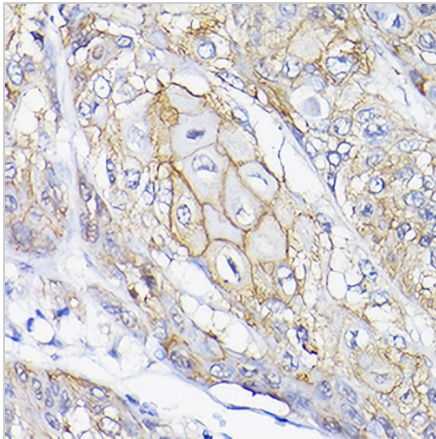
Semaphorin 4F Rabbit Polyclonal Antibody

CAT. NO. APA13940

DATA



Western blot analysis of Semaphorin 4F expression in HepG2 (A), A549 (B), mouse brain (C), mouse lung (D), rat liver (E) whole cell lysates. (Predicted band size: 66; 83 kD; Observed band size: 83 kD)



Immunohistochemical analysis of Semaphorin 4F staining in human esophageal cancer formalin fixed paraffin embedded tissue section. The section was pre-treated using heat mediated antigen retrieval with sodium citrate buffer (pH 6.0). The section was then incubated with the antibody at room temperature and detected using an HRP conjugated compact polymer system. DAB was used as the chromogen. The section was then counterstained with haematoxylin and mounted with DPX.

STORAGE

Store at 4°C short term. For long term storage, store at -20°C, avoiding freeze/thaw cycles.

NOTE

For Research Use Only. Not for diagnostic, therapeutics, prophylactic or in vivo use.