

DATASHEET

CD307c Rabbit Polyclonal Antibody

CAT. NO. APA13947

KEY FEATURES

Target	CD307c	Source / Host	Rabbit
Reactivity	Human, Mouse, Rat	Clonality	Polyclonal
Applications	WB, IHC	Conjugation	Unconjugated
Form / Buffer	Liquid in 0.42% Potassium phosphate, 0.87% Sodium chloride, pH 7.3, 30% glycerol, and 0.01% sodium azide.		Storage at-20°C

BACKGROUND

Promotes TLR9-induced B-cell proliferation, activation and survival but inhibits antibody production and suppresses plasma cell differentiation. Enhances activation of NF-kappa-B and MAPK signaling pathways in TLR9 stimulated B-cells . Has inhibitory potential on B-cell receptor (BCR)-mediated signaling, possibly through association with SH2 domain-containing phosphatases. Inhibits cell tyrosine phosphorylation, calcium mobilization and activation-induced cell death induced through BCR signaling . Regulatory T-cells expressing FCRL3 exhibit a memory phenotype, are relatively nonresponsive to antigenic stimulation in presence of IL2 and have reduced capacity to suppress the proliferation of effector T-cells .

APPLICATION

To ensure optimal assay performance, AREX recommends conducting reagent titration tailored to each testing system for optimal detection results.

WB	1:500 - 1:2000
IHC	1:50 - 1:200

*Results are sample-specific. Please refer to your local assay conditions and test parameters for reference.

PRODUCT OVERVIEW

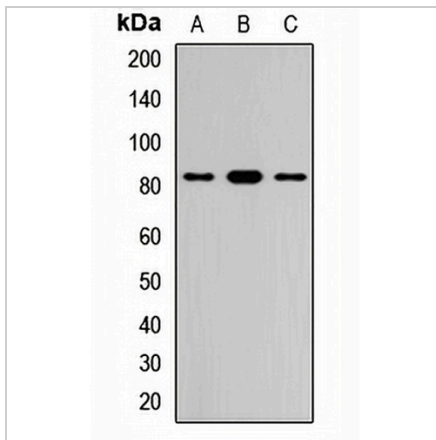
Description	Rabbit polyclonal antibody to CD307c
Specificity	Recognizes endogenous levels of CD307c protein.
Antibody Type	Primary antibody
Immunogen	Recombinant fusion protein of human CD307c
Purification	The antibody was purified by immunogen affinity chromatography.
Molecular Weight	Predicted: 21; Observed: 81 kD
Form/Buffer	Liquid in 0.42% Potassium phosphate, 0.87% Sodium chloride, pH 7.3, 30% glycerol, and 0.01% sodium azide.
Alternative Names	FCRH3; IFGP3; IRTA3; SPAP2; Fc receptor-like protein 3; FcR-like protein 3; FcRL3; Fc receptor homolog 3; FcRH3; IFGP family protein 3; hIFGP3; Immune receptor translocation-associated protein 3; SH2 domain-containing phosphatase anchor protein 2; CD307c
Gene Symbol	FCRL3
Entrez Gene	115352(Human)
SwissProt	Q96P31(Human)

*AREX continuously optimizes our products. Webpage content may not reflect the latest updates. For inquiries, please contact info@arexbio.com or your local distributor.

*Clone Number, Reactivity, Source/Host and Clonality can be found in the product name and Key Features section above.

DATASHEET**CD307c Rabbit Polyclonal Antibody**

CAT. NO. APA13947

DATA

Western blot analysis of CD307c expression in HEK293T (A), HeLa (B), mouse kidney (C) whole cell lysates. (Predicted band size: 21; 22; 69; 77; 80; 81 kD; Observed band size: 81 kD)

STORAGE

Store at 4°C short term. For long term storage, store at -20°C, avoiding freeze/thaw cycles.

NOTE

For Research Use Only. Not for diagnostic, therapeutics, prophylactic or in vivo use.