

DATASHEET

PDE1A Rabbit Polyclonal Antibody

CAT. NO. APA13948

KEY FEATURES

Target	PDE1A	Source / Host	Rabbit
Reactivity	Human, Mouse, Rat	Clonality	Polyclonal
Applications	WB	Conjugation	Unconjugated
Form / Buffer	Liquid in 0.42% Potassium phosphate, 0.87% Sodium chloride, pH 7.3, 30% glycerol, and 0.01% sodium azide.		Storage at -20°C

BACKGROUND

Calcium/calmodulin-dependent cyclic nucleotide phosphodiesterase with a dual specificity for the second messengers cGMP and cAMP, which are key regulators of many important physiological processes. Has a higher efficiency with cGMP compared to cAMP.

APPLICATION

To ensure optimal assay performance, AREX recommends conducting reagent titration tailored to each testing system for optimal detection results.

WB	1:500 - 1:2000
----	----------------

*Results are sample-specific. Please refer to your local assay conditions and test parameters for reference.

PRODUCT OVERVIEW

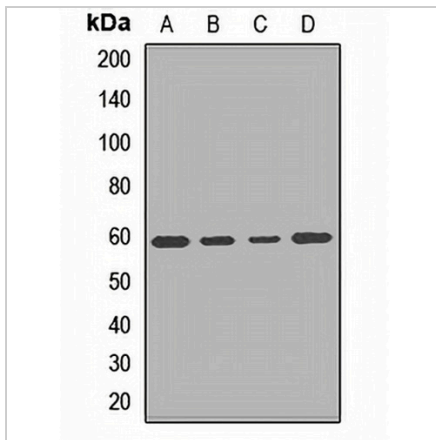
Description	Rabbit polyclonal antibody to PDE1A
Specificity	Recognizes endogenous levels of PDE1A protein.
Antibody Type	Primary antibody
Immunogen	Recombinant fusion protein of human PDE1A
Purification	The antibody was purified by immunogen affinity chromatography.
Molecular Weight	Predicted: 57; Observed: 57 kD
Form/Buffer	Liquid in 0.42% Potassium phosphate, 0.87% Sodium chloride, pH 7.3, 30% glycerol, and 0.01% sodium azide.
Alternative Names	Calcium/calmodulin-dependent 3',5'-cyclic nucleotide phosphodiesterase 1A; Cam-PDE 1A; 61 kDa Cam-PDE; hCam-1
Gene Symbol	PDE1A
Entrez Gene	5136(Human); 18573(Mouse)
SwissProt	P54750(Human); Q61481(Mouse)

*AREX continuously optimizes our products. Webpage content may not reflect the latest updates. For inquiries, please contact info@arexbio.com or your local distributor.

*Clone Number, Reactivity, Source/Host and Clonality can be found in the product name and Key Features section above.

DATASHEET**PDE1A Rabbit Polyclonal Antibody**

CAT. NO. APA13948

DATA

Western blot analysis of PDE1A expression in mouse heart (A), mouse kidney (B), rat heart (C), rat brain (D) whole cell lysates. (Predicted band size: 57; 58; 59; 60; 61; 62; 63 kD; Observed band size: 57 kD)

STORAGE

Store at 4°C short term. For long term storage, store at -20°C, avoiding freeze/thaw cycles.

NOTE

For Research Use Only. Not for diagnostic, therapeutics, prophylactic or in vivo use.