

## DATASHEET

# TRAPPC2 Rabbit Polyclonal Antibody

CAT. NO. APA13952

### KEY FEATURES

Target	TRAPPC2	Source / Host	Rabbit
Reactivity	Human, Mouse, Rat	Clonality	Polyclonal
Applications	WB	Conjugation	Unconjugated
Form / Buffer	Liquid in 0.42% Potassium phosphate, 0.87% Sodium chloride, pH 7.3, 30% glycerol, and 0.01% sodium azide.	Storage	at-20°C

### BACKGROUND

Prevents transcriptional repression and induction of cell death by ENO1 . May play a role in vesicular transport from endoplasmic reticulum to Golgi.

### APPLICATION

To ensure optimal assay performance, AREX recommends conducting reagent titration tailored to each testing system for optimal detection results.

WB	1:500 - 1:2000
----	----------------

\*Results are sample-specific. Please refer to your local assay conditions and test parameters for reference.

### PRODUCT OVERVIEW

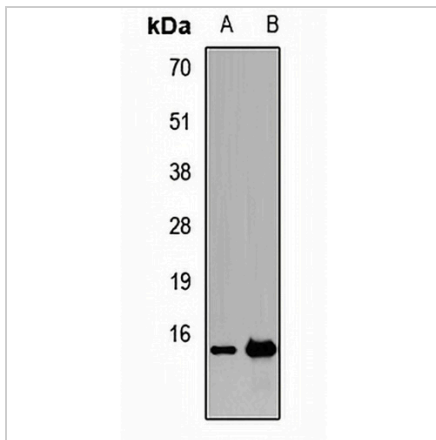
Description	Rabbit polyclonal antibody to TRAPPC2
Specificity	Recognizes endogenous levels of TRAPPC2 protein.
Antibody Type	Primary antibody
Immunogen	Recombinant fusion protein of human TRAPPC2
Purification	The antibody was purified by immunogen affinity chromatography.
Molecular Weight	Predicted: 14; Observed: 16 kD
Form/Buffer	Liquid in 0.42% Potassium phosphate, 0.87% Sodium chloride, pH 7.3, 30% glycerol, and 0.01% sodium azide.
Alternative Names	SEDL; Trafficking protein particle complex subunit 2; Sedlin
Gene Symbol	TRAPPC2
Entrez Gene	6399(Human)
SwissProt	PODI81(Human)

\*AREX continuously optimizes our products. Webpage content may not reflect the latest updates. For inquiries, please contact [info@arexbio.com](mailto:info@arexbio.com) or your local distributor.

\*Clone Number, Reactivity, Source/Host and Clonality can be found in the product name and Key Features section above.

**DATASHEET****TRAPPC2 Rabbit Polyclonal Antibody**

CAT. NO. APA13952

**DATA**

Western blot analysis of TRAPPC2 expression in HEK293T (A), SW620 (B) whole cell lysates. (Predicted band size: 14; 16; 20 kD; Observed band size: 16 kD)

**STORAGE**

Store at 4°C short term. For long term storage, store at -20°C, avoiding freeze/thaw cycles.

**NOTE**

For Research Use Only. Not for diagnostic, therapeutics, prophylactic or in vivo use.