

**DATASHEET**

**ARAP1 Rabbit Polyclonal Antibody**

CAT. NO. APA13953

**KEY FEATURES**

Target	ARAP1	Source / Host	Rabbit
Reactivity	Human, Mouse, Rat	Clonality	Polyclonal
Applications	WB	Conjugation	Unconjugated
Form / Buffer	Liquid in 0.42% Potassium phosphate, 0.87% Sodium chloride, pH 7.3, 30% glycerol, and 0.01% sodium azide.		Storage at -20°C

**BACKGROUND**

Phosphatidylinositol 3,4,5-trisphosphate-dependent GTPase-activating protein that modulates actin cytoskeleton remodeling by regulating ARF and RHO family members . Activated by phosphatidylinositol 3,4,5-trisphosphate (PtdIns(3,4,5)P3) binding and, to a lesser extent, by phosphatidylinositol 3,4-bisphosphate (PtdIns(3,4)P2) binding . Has a preference for ARF1 and ARF5 . Positively regulates the ring size of circular dorsal ruffles and promotes macropinocytosis . Acts as a bridging factor in osteoclasts to control actin and membrane dynamics . Regulates the condensing of osteoclast podosomes into sealing zones which segregate the bone-facing membrane from other membrane domains and are required for osteoclast resorption activity .

**APPLICATION**

To ensure optimal assay performance, AREX recommends conducting reagent titration tailored to each testing system for optimal detection results.

WB	1:500 - 1:2000
----	----------------

\*Results are sample-specific. Please refer to your local assay conditions and test parameters for reference.

**PRODUCT OVERVIEW**

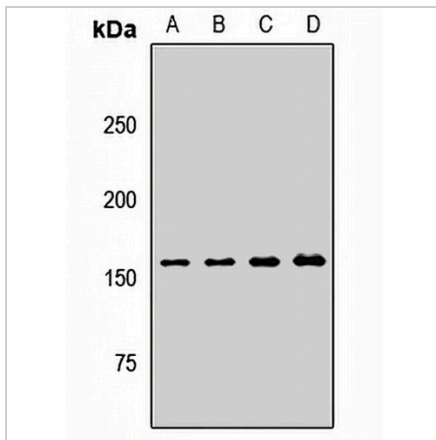
Description	Rabbit polyclonal antibody to ARAP1
Specificity	Recognizes endogenous levels of ARAP1 protein.
Antibody Type	Primary antibody
Immunogen	Recombinant fusion protein of human ARAP1
Purification	The antibody was purified by immunogen affinity chromatography.
Molecular Weight	Predicted: 77; Observed: 162 kD
Form/Buffer	Liquid in 0.42% Potassium phosphate, 0.87% Sodium chloride, pH 7.3, 30% glycerol, and 0.01% sodium azide.
Alternative Names	CENTD2; KIAA0782; Arf-GAP with Rho-GAP domain, ANK repeat and PH domain-containing protein 1; Centaurin-delta-2; Cnt-d2
Gene Symbol	ARAP1
Entrez Gene	116985(Human); 69710(Mouse)
SwissProt	Q96P48(Human); Q4LDD4(Mouse)

\*AREX continuously optimizes our products. Webpage content may not reflect the latest updates. For inquiries, please contact [info@arexbio.com](mailto:info@arexbio.com) or your local distributor.

\*Clone Number, Reactivity, Source/Host and Clonality can be found in the product name and Key Features section above.

**DATASHEET****ARAP1 Rabbit Polyclonal Antibody**

CAT. NO. APA13953

**DATA**

Western blot analysis of ARAP1 expression in HEK293T (A), HeLa (B), mouse liver (C), rat liver (D) whole cell lysates. (Predicted band size: 77; 127; 135; 136; 160; 162 kD; Observed band size: 162 kD)

**STORAGE**

Store at 4°C short term. For long term storage, store at -20°C, avoiding freeze/thaw cycles.

**NOTE**

For Research Use Only. Not for diagnostic, therapeutics, prophylactic or in vivo use.