

## DATASHEET

# Beta-COP Rabbit Polyclonal Antibody

CAT. NO. APA13955

### KEY FEATURES

Target	Beta-COP	Source / Host	Rabbit
Reactivity	Human, Mouse, Rat	Clonality	Polyclonal
Applications	WB	Conjugation	Unconjugated
Form / Buffer	Liquid in 0.42% Potassium phosphate, 0.87% Sodium chloride, pH 7.3, 30% glycerol, and 0.01% sodium azide.		Storage at-20°C

### BACKGROUND

The coatomer is a cytosolic protein complex that binds to dilysine motifs and reversibly associates with Golgi non-clathrin-coated vesicles, which further mediate biosynthetic protein transport from the ER, via the Golgi up to the trans Golgi network. Coatomer complex is required for budding from Golgi membranes, and is essential for the retrograde Golgi-to-ER transport of dilysine-tagged proteins. In mammals, the coatomer can only be recruited by membranes associated to ADP-ribosylation factors (ARFs), which are small GTP-binding proteins; the complex also influences the Golgi structural integrity, as well as the processing, activity, and endocytic recycling of LDL receptors.

### APPLICATION

To ensure optimal assay performance, AREX recommends conducting reagent titration tailored to each testing system for optimal detection results.

WB	1:500 - 1:2000
----	----------------

\*Results are sample-specific. Please refer to your local assay conditions and test parameters for reference.

### PRODUCT OVERVIEW

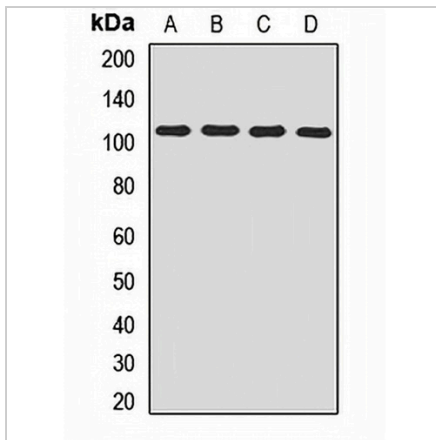
Description	Rabbit polyclonal antibody to Beta-COP
Specificity	Recognizes endogenous levels of Beta-COP protein.
Antibody Type	Primary antibody
Immunogen	Recombinant fusion protein of human Beta-COP
Purification	The antibody was purified by immunogen affinity chromatography.
Molecular Weight	Predicted: 107 kD; Observed: 110 kD
Form/Buffer	Liquid in 0.42% Potassium phosphate, 0.87% Sodium chloride, pH 7.3, 30% glycerol, and 0.01% sodium azide.
Alternative Names	COPB; Coatomer subunit beta; Beta-coat protein; Beta-COP
Gene Symbol	COPB1
Entrez Gene	1315(Human); 70349(Mouse); 114023(Rat)
SwissProt	P53618(Human); Q9JIF7(Mouse); P23514(Rat)

\*AREX continuously optimizes our products. Webpage content may not reflect the latest updates. For inquiries, please contact [info@arexbio.com](mailto:info@arexbio.com) or your local distributor.

\*Clone Number, Reactivity, Source/Host and Clonality can be found in the product name and Key Features section above.

**DATASHEET****Beta-COP Rabbit Polyclonal Antibody**

CAT. NO. APA13955

**DATA**

Western blot analysis of Beta-COP expression in A549 (A), NIH3T3 (B), mouse heart (C), rat liver (D) whole cell lysates. (Predicted band size: 107 kD; Observed band size: 110 kD)

**STORAGE**

Store at 4°C short term. For long term storage, store at -20°C, avoiding freeze/thaw cycles.

**NOTE**

For Research Use Only. Not for diagnostic, therapeutics, prophylactic or in vivo use.