

**DATASHEET**

**CDC25 Rabbit Polyclonal Antibody**

CAT. NO. APA13958

**KEY FEATURES**

Target	CDC25	Source / Host	Rabbit
Reactivity	Human	Clonality	Polyclonal
Applications	WB	Conjugation	Unconjugated
Form / Buffer	Liquid in 0.42% Potassium phosphate, 0.87% Sodium chloride, pH 7.3, 30% glycerol, and 0.01% sodium azide.		Storage at-20°C

**BACKGROUND**

Functions as a calcium- and diacylglycerol (DAG)-regulated nucleotide exchange factor specifically activating Ras through the exchange of bound GDP for GTP . Activates the Erk/MAP kinase cascade . Regulates T-cell/B-cell development, homeostasis and differentiation by coupling T-lymphocyte/B-lymphocyte antigen receptors to Ras . Regulates NK cell cytotoxicity and ITAM-dependent cytokine production by activation of Ras-mediated ERK and JNK pathways . Functions in mast cell degranulation and cytokine secretion, regulating FcεRI-evoked allergic responses. May also function in differentiation of other cell types .

**APPLICATION**

To ensure optimal assay performance, AREX recommends conducting reagent titration tailored to each testing system for optimal detection results.

WB	1:500 - 1:2000
----	----------------

\*Results are sample-specific. Please refer to your local assay conditions and test parameters for reference.

**PRODUCT OVERVIEW**

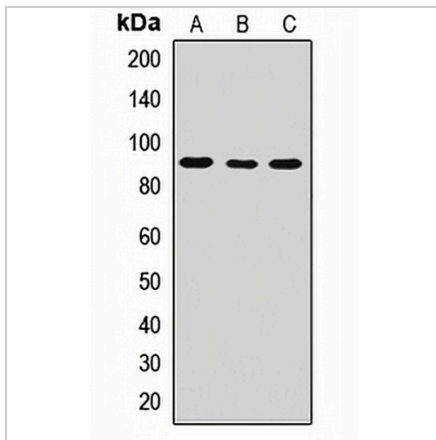
Description	Rabbit polyclonal antibody to CDC25
Specificity	Recognizes endogenous levels of CDC25 protein.
Antibody Type	Primary antibody
Immunogen	Recombinant fusion protein of human CDC25
Purification	The antibody was purified by immunogen affinity chromatography.
Molecular Weight	Predicted: 55; Observed: 90 kD
Form/Buffer	Liquid in 0.42% Potassium phosphate, 0.87% Sodium chloride, pH 7.3, 30% glycerol, and 0.01% sodium azide.
Alternative Names	RASGRP; RAS guanyl-releasing protein 1; Calcium and DAG-regulated guanine nucleotide exchange factor II; CalDAG-GEFII; Ras guanyl-releasing protein
Gene Symbol	RASGRP1
Entrez Gene	10125(Human)
SwissProt	O95267(Human)

\*AREX continuously optimizes our products. Webpage content may not reflect the latest updates. For inquiries, please contact [info@arexbio.com](mailto:info@arexbio.com) or your local distributor.

\*Clone Number, Reactivity, Source/Host and Clonality can be found in the product name and Key Features section above.

**DATASHEET****CDC25 Rabbit Polyclonal Antibody**

CAT. NO. APA13958

**DATA**

Western blot analysis of CDC25 expression in MCF7 (A), A549 (B), SW480 (C) whole cell lysates. (Predicted band size: 55; 62; 68; 86; 90 kD; Observed band size: 90 kD)

**STORAGE**

Store at 4°C short term. For long term storage, store at -20°C, avoiding freeze/thaw cycles.

**NOTE**

For Research Use Only. Not for diagnostic, therapeutics, prophylactic or in vivo use.