

DATASHEET

NOMO1 Rabbit Polyclonal Antibody

CAT. NO. APA13961

KEY FEATURES

Target	NOMO1	Source / Host	Rabbit
Reactivity	Human, Mouse, Rat	Clonality	Polyclonal
Applications	WB	Conjugation	Unconjugated
Form / Buffer	Liquid in 0.42% Potassium phosphate, 0.87% Sodium chloride, pH 7.3, 30% glycerol, and 0.01% sodium azide.		Storage at-20°C

BACKGROUND

Component of the multi-pass translocon (MPT) complex that mediates insertion of multi-pass membrane proteins into the lipid bilayer of membranes complex that mediates insertion of multi-pass membrane proteins into the lipid bilayer of membranes . The MPT complex takes over after the SEC61 complex: following membrane insertion of the first few transmembrane segments of proteins by the SEC61 complex, the MPT complex occludes the lateral gate of the SEC61 complex to promote insertion of subsequent transmembrane regions .

APPLICATION

To ensure optimal assay performance, AREX recommends conducting reagent titration tailored to each testing system for optimal detection results.

WB	1:500 - 1:2000
----	----------------

*Results are sample-specific. Please refer to your local assay conditions and test parameters for reference.

PRODUCT OVERVIEW

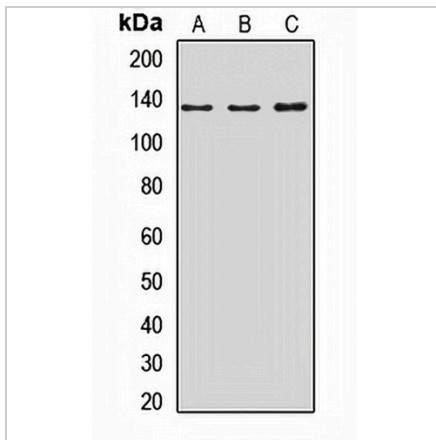
Description	Rabbit polyclonal antibody to NOMO1
Specificity	Recognizes endogenous levels of NOMO1 protein.
Antibody Type	Primary antibody
Immunogen	Recombinant fusion protein of human NOMO1
Purification	The antibody was purified by immunogen affinity chromatography.
Molecular Weight	Predicted: 134 kD; Observed: 134 kD
Form/Buffer	Liquid in 0.42% Potassium phosphate, 0.87% Sodium chloride, pH 7.3, 30% glycerol, and 0.01% sodium azide.
Alternative Names	PM5; Nodal modulator 1; pM5 protein
Gene Symbol	NOMO1
Entrez Gene	23420(Human)
SwissProt	Q15155(Human)

*AREX continuously optimizes our products. Webpage content may not reflect the latest updates. For inquiries, please contact info@arexbio.com or your local distributor.

*Clone Number, Reactivity, Source/Host and Clonality can be found in the product name and Key Features section above.

DATASHEET**NOMO1 Rabbit Polyclonal Antibody**

CAT. NO. APA13961

DATA

Western blot analysis of NOMO1 expression in A431 (A), MCF7 (B), rat kidney (C) whole cell lysates. (Predicted band size: 134 kD; Observed band size: 134 kD)

STORAGE

Store at 4°C short term. For long term storage, store at -20°C, avoiding freeze/thaw cycles.

NOTE

For Research Use Only. Not for diagnostic, therapeutics, prophylactic or in vivo use.