

**DATASHEET**

**Gamma-COP Rabbit Polyclonal Antibody**

CAT. NO. APA13967

**KEY FEATURES**

Target	Gamma-COP	Source / Host	Rabbit
Reactivity	Human, Mouse, Rat	Clonality	Polyclonal
Applications	WB, IHC	Conjugation	Unconjugated
Form / Buffer	Liquid in 0.42% Potassium phosphate, 0.87% Sodium chloride, pH 7.3, 30% glycerol, and 0.01% sodium azide.		Storage at-20°C

**BACKGROUND**

The coatomer is a cytosolic protein complex that binds to dilysine motifs and reversibly associates with Golgi non-clathrin-coated vesicles, which further mediate biosynthetic protein transport from the ER, via the Golgi up to the trans Golgi network. Coatomer complex is required for budding from Golgi membranes, and is essential for the retrograde Golgi-to-ER transport of dilysine-tagged proteins. In mammals, the coatomer can only be recruited by membranes associated to ADP-ribosylation factors (ARFs), which are small GTP-binding proteins; the complex also influences the Golgi structural integrity, as well as the processing, activity, and endocytic recycling of LDL receptors. Required for limiting lipid storage in lipid droplets.

**APPLICATION**

To ensure optimal assay performance, AREX recommends conducting reagent titration tailored to each testing system for optimal detection results.

WB	1:500 - 1:2000
IHC	1:50 - 1:200

\*Results are sample-specific. Please refer to your local assay conditions and test parameters for reference.

**PRODUCT OVERVIEW**

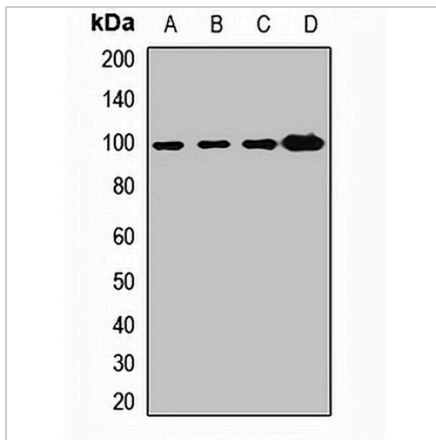
Description	Rabbit polyclonal antibody to Gamma-COP
Specificity	Recognizes endogenous levels of Gamma-COP protein.
Antibody Type	Primary antibody
Immunogen	Recombinant fusion protein of human Gamma-COP
Purification	The antibody was purified by immunogen affinity chromatography.
Molecular Weight	Predicted: 97 kD; Observed: 100 kD
Form/Buffer	Liquid in 0.42% Potassium phosphate, 0.87% Sodium chloride, pH 7.3, 30% glycerol, and 0.01% sodium azide.
Alternative Names	COPG; Coatomer subunit gamma-1; Gamma-1-coat protein; Gamma-1-COP
Gene Symbol	COPG1
Entrez Gene	22820(Human); 54161(Mouse); 297428(Rat)
SwissProt	Q9Y678(Human); Q9QZE5(Mouse); Q4AEF8(Rat)

\*AREX continuously optimizes our products. Webpage content may not reflect the latest updates. For inquiries, please contact [info@arexbio.com](mailto:info@arexbio.com) or your local distributor.

\*Clone Number, Reactivity, Source/Host and Clonality can be found in the product name and Key Features section above.

**DATASHEET****Gamma-COP Rabbit Polyclonal Antibody**

CAT. NO. APA13967

**DATA**

Western blot analysis of Gamma-COP expression in HepG2 (A), mouse liver (B), mouse kidney (C), rat kidney (D) whole cell lysates. (Predicted band size: 97 kD; Observed band size: 100 kD)

**STORAGE**

Store at 4°C short term. For long term storage, store at -20°C, avoiding freeze/thaw cycles.

**NOTE**

For Research Use Only. Not for diagnostic, therapeutics, prophylactic or in vivo use.