

DATASHEET

SEC11A Rabbit Polyclonal Antibody

CAT. NO. APA13968

KEY FEATURES

Target	SEC11A	Source / Host	Rabbit
Reactivity	Human, Mouse, Rat	Clonality	Polyclonal
Applications	WB, IF/ICC	Conjugation	Unconjugated
Form / Buffer	Liquid in 0.42% Potassium phosphate, 0.87% Sodium chloride, pH 7.3, 30% glycerol, and 0.01% sodium azide.		Storage at -20°C

BACKGROUND

Catalytic component of the signal peptidase complex (SPC) which catalyzes the cleavage of N-terminal signal sequences from nascent proteins as they are translocated into the lumen of the endoplasmic reticulum which catalyzes the cleavage of N-terminal signal sequences from nascent proteins as they are translocated into the lumen of the endoplasmic reticulum . Specifically cleaves N-terminal signal peptides that contain a hydrophobic alpha-helix (h-region) shorter than 18-20 amino acids .

APPLICATION

To ensure optimal assay performance, AREX recommends conducting reagent titration tailored to each testing system for optimal detection results.

WB	1:500 - 1:2000
IF/ICC	1:50 - 1:200

*Results are sample-specific. Please refer to your local assay conditions and test parameters for reference.

PRODUCT OVERVIEW

Description	Rabbit polyclonal antibody to SEC11A
Specificity	Recognizes endogenous levels of SEC11A protein.
Antibody Type	Primary antibody
Immunogen	Recombinant fusion protein of human SEC11A
Purification	The antibody was purified by immunogen affinity chromatography.
Molecular Weight	Predicted: 17; Observed: 21 kD
Form/Buffer	Liquid in 0.42% Potassium phosphate, 0.87% Sodium chloride, pH 7.3, 30% glycerol, and 0.01% sodium azide.
Alternative Names	SEC11L1; SPC18; SPCS4A; Signal peptidase complex catalytic subunit SEC11A; Endopeptidase SP18; Microsomal signal peptidase 18 kDa subunit; SPase 18 kDa subunit; SEC11 homolog A; SEC11-like protein 1; SPC18
Gene Symbol	SEC11A
Entrez Gene	23478(Human); 56529(Mouse)
SwissProt	P67812(Human); Q9R0P6(Mouse); P42667(Rat)

*AREX continuously optimizes our products. Webpage content may not reflect the latest updates. For inquiries, please contact info@arexbio.com or your local distributor.

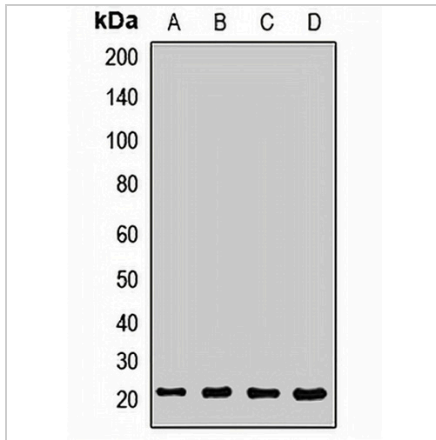
*Clone Number, Reactivity, Source/Host and Clonality can be found in the product name and Key Features section above.

DATASHEET

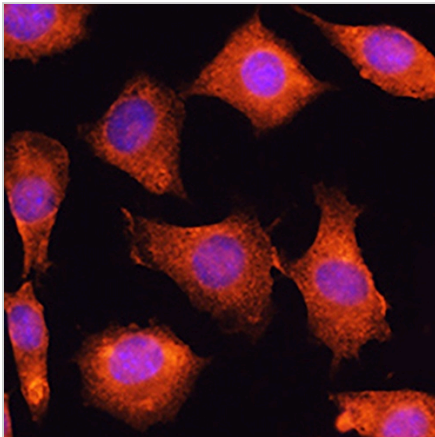
SEC11A Rabbit Polyclonal Antibody

CAT. NO. APA13968

DATA



Western blot analysis of SEC11A expression in HT29 (A), Raji (B), mouse lung (C), rat brain (D) whole cell lysates. (Predicted band size: 17; 18; 20; 21 kD; Observed band size: 21 kD)



Immunofluorescent analysis of SEC11A staining in L929 cells. Formalin-fixed cells were permeabilized with 0.1% Triton X-100 in TBS for 5-10 minutes and blocked with 3% BSA-PBS for 30 minutes at room temperature. Cells were probed with the primary antibody in 3% BSA-PBS and incubated overnight at 4 °C in a humidified chamber. Cells were washed with PBST and incubated with a AREX® Fluor 594-conjugated secondary antibody (red) in PBS at room temperature in the dark. DAPI was used to stain the cell nuclei (blue).

STORAGE

Store at 4°C short term. For long term storage, store at -20°C, avoiding freeze/thaw cycles.

NOTE

For Research Use Only. Not for diagnostic, therapeutics, prophylactic or in vivo use.