

DATASHEET

LGN Rabbit Polyclonal Antibody

CAT. NO. APA13969

KEY FEATURES

Target	LGN	Source / Host	Rabbit
Reactivity	Human, Mouse	Clonality	Polyclonal
Applications	WB	Conjugation	Unconjugated
Form / Buffer	Liquid in 0.42% Potassium phosphate, 0.87% Sodium chloride, pH 7.3, 30% glycerol, and 0.01% sodium azide.		Storage at -20°C

BACKGROUND

Plays an important role in mitotic spindle pole organization via its interaction with NUMA1 . Required for cortical dynein-dynactin complex recruitment during metaphase . Plays a role in metaphase spindle orientation . Also plays an important role in asymmetric cell divisions . Has guanine nucleotide dissociation inhibitor (GDI) activity towards G(i) alpha proteins, such as GNAI1 and GNAI3, and thereby regulates their activity .

APPLICATION

To ensure optimal assay performance, AREX recommends conducting reagent titration tailored to each testing system for optimal detection results.

WB	1:500 - 1:1000
----	----------------

*Results are sample-specific. Please refer to your local assay conditions and test parameters for reference.

PRODUCT OVERVIEW

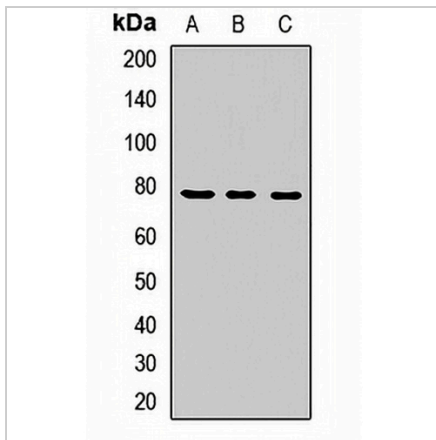
Description	Rabbit polyclonal antibody to LGN
Specificity	Recognizes endogenous levels of LGN protein.
Antibody Type	Primary antibody
Immunogen	Recombinant fusion protein of human LGN
Purification	The antibody was purified by immunogen affinity chromatography.
Molecular Weight	Predicted: 76 kD; Observed: 76 kD
Form/Buffer	Liquid in 0.42% Potassium phosphate, 0.87% Sodium chloride, pH 7.3, 30% glycerol, and 0.01% sodium azide.
Alternative Names	LGN; G-protein-signaling modulator 2; Mosaic protein LGN
Gene Symbol	GPSM2
Entrez Gene	29899(Human); 76123(Mouse)
SwissProt	P81274(Human); Q8VDU0(Mouse)

*AREX continuously optimizes our products. Webpage content may not reflect the latest updates. For inquiries, please contact info@arexbio.com or your local distributor.

*Clone Number, Reactivity, Source/Host and Clonality can be found in the product name and Key Features section above.

DATASHEET**LGN Rabbit Polyclonal Antibody**

CAT. NO. APA13969

DATA

Western blot analysis of LGN expression in HeLa (A), mouse brain (B), mouse liver (C) whole cell lysates. (Predicted band size: 76 kD; Observed band size: 76 kD)

STORAGE

Store at 4°C short term. For long term storage, store at -20°C, avoiding freeze/thaw cycles.

NOTE

For Research Use Only. Not for diagnostic, therapeutics, prophylactic or in vivo use.