

## DATASHEET

# SR- beta Rabbit Polyclonal Antibody

CAT. NO. APA13976

### KEY FEATURES

Target	SR- beta	Source / Host	Rabbit
Reactivity	Human, Mouse, Rat	Clonality	Polyclonal
Applications	WB, IF/ICC	Conjugation	Unconjugated
Form / Buffer	Liquid in 0.42% Potassium phosphate, 0.87% Sodium chloride, pH 7.3, 30% glycerol, and 0.01% sodium azide.		Storage at-20°C

### BACKGROUND

Component of the signal recognition particle (SRP) complex receptor (SR) . Ensures, in conjunction with the SRP complex, the correct targeting of the nascent secretory proteins to the endoplasmic reticulum membrane system . May mediate the membrane association of SR .

### APPLICATION

To ensure optimal assay performance, AREX recommends conducting reagent titration tailored to each testing system for optimal detection results.

WB	1:500 - 1:2000
IF/ICC	1:50 - 1:200

\*Results are sample-specific. Please refer to your local assay conditions and test parameters for reference.

### PRODUCT OVERVIEW

Description	Rabbit polyclonal antibody to SR- beta
Specificity	Recognizes endogenous levels of SR- beta protein.
Antibody Type	Primary antibody
Immunogen	Recombinant fusion protein of human SR- beta
Purification	The antibody was purified by immunogen affinity chromatography.
Molecular Weight	Predicted: 29 kD; Observed: 30 kD
Form/Buffer	Liquid in 0.42% Potassium phosphate, 0.87% Sodium chloride, pH 7.3, 30% glycerol, and 0.01% sodium azide.
Alternative Names	Signal recognition particle receptor subunit beta; SR-beta; Protein APMCF1
Gene Symbol	SRPRB
Entrez Gene	58477(Human); 20818(Mouse); 300965(Rat)
SwissProt	Q9Y5M8(Human); P47758(Mouse); Q4FZX7(Rat)

\*AREX continuously optimizes our products. Webpage content may not reflect the latest updates. For inquiries, please contact [info@arexbio.com](mailto:info@arexbio.com) or your local distributor.

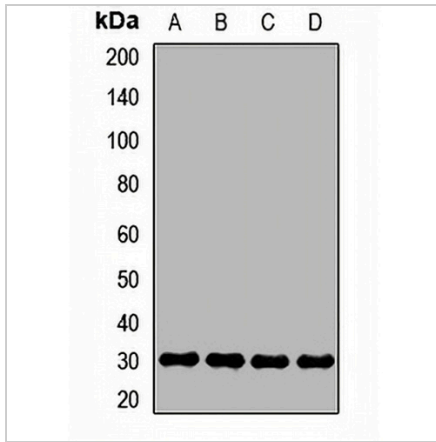
\*Clone Number, Reactivity, Source/Host and Clonality can be found in the product name and Key Features section above.

**DATASHEET**

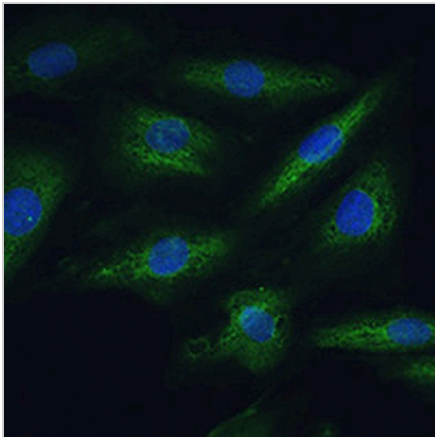
**SR- beta Rabbit Polyclonal Antibody**

CAT. NO. APA13976

**DATA**



Western blot analysis of SR- beta expression in MCF7 (A), HT29 (B), mouse liver (C), rat liver (D) whole cell lysates. (Predicted band size: 29 kD; Observed band size: 30 kD)



Immunofluorescent analysis of SR- beta staining in H9C2 cells. Formalin-fixed cells were permeabilized with 0.1% Triton X-100 in TBS for 5-10 minutes and blocked with 3% BSA-PBS for 30 minutes at room temperature. Cells were probed with the primary antibody in 3% BSA-PBS and incubated overnight at 4 °C in a humidified chamber. Cells were washed with PBST and incubated with a AREX® Fluor 488 -conjugated secondary antibody (green) in PBS at room temperature in the dark. DAPI was used to stain the cell nuclei (blue).

**STORAGE**

Store at 4°C short term. For long term storage, store at -20°C, avoiding freeze/thaw cycles.

**NOTE**

For Research Use Only. Not for diagnostic, therapeutics, prophylactic or in vivo use.