

## DATASHEET

# LYZL6 Rabbit Polyclonal Antibody

CAT. NO. APA13981

### KEY FEATURES

Target	LYZL6	Source / Host	Rabbit
Reactivity	Human	Clonality	Polyclonal
Applications	WB	Conjugation	Unconjugated
Form / Buffer	Liquid in 0.42% Potassium phosphate, 0.87% Sodium chloride, pH 7.3, 30% glycerol, and 0.01% sodium azide.		Storage at -20°C

### BACKGROUND

May be involved sperm-egg plasma membrane adhesion and fusion during fertilization . Exhibits bacteriolytic activity in vitro against *Micrococcus luteus* and *Staphylococcus aureus* . Shows weak bacteriolytic activity against Gram-positive bacteria at physiological pH . Bacteriolytic activity is pH-dependent, with a maximum at around pH 5.6 .

### APPLICATION

To ensure optimal assay performance, AREX recommends conducting reagent titration tailored to each testing system for optimal detection results.

WB	1:500 - 1:1000
----	----------------

\*Results are sample-specific. Please refer to your local assay conditions and test parameters for reference.

### PRODUCT OVERVIEW

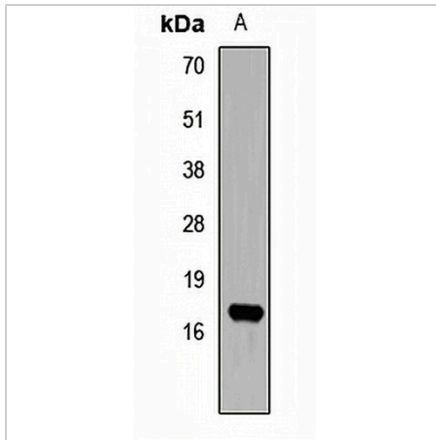
Description	Rabbit polyclonal antibody to LYZL6
Specificity	Recognizes endogenous levels of LYZL6 protein.
Antibody Type	Primary antibody
Immunogen	Recombinant fusion protein of human LYZL6
Purification	The antibody was purified by immunogen affinity chromatography.
Molecular Weight	Predicted: 16 kD; Observed: 17 kD
Form/Buffer	Liquid in 0.42% Potassium phosphate, 0.87% Sodium chloride, pH 7.3, 30% glycerol, and 0.01% sodium azide.
Alternative Names	LYC1; Lysozyme-like protein 6
Gene Symbol	LYZL6
Entrez Gene	57151(Human); 69444(Mouse)
SwissProt	O75951(Human); Q9DA11(Mouse)

\*AREX continuously optimizes our products. Webpage content may not reflect the latest updates. For inquiries, please contact [info@arexbio.com](mailto:info@arexbio.com) or your local distributor.

\*Clone Number, Reactivity, Source/Host and Clonality can be found in the product name and Key Features section above.

**DATASHEET****LYZL6 Rabbit Polyclonal Antibody**

CAT. NO. APA13981

**DATA**

Western blot analysis of LYZL6 expression in Human testis (A) whole cell lysates.  
(Predicted band size: 16 kD; Observed band size: 17 kD)

**STORAGE**

Store at 4°C short term. For long term storage, store at -20°C, avoiding freeze/thaw cycles.

**NOTE**

For Research Use Only. Not for diagnostic, therapeutics, prophylactic or in vivo use.