

DATASHEET

LAPTM4B Rabbit Polyclonal Antibody

CAT. NO. APA13982

KEY FEATURES

Target	LAPTM4B	Source / Host	Rabbit
Reactivity	Human, Mouse, Rat	Clonality	Polyclonal
Applications	WB	Conjugation	Unconjugated
Form / Buffer	Liquid in 0.42% Potassium phosphate, 0.87% Sodium chloride, pH 7.3, 30% glycerol, and 0.01% sodium azide.		Storage at-20°C

BACKGROUND

Required for optimal lysosomal function . Blocks EGF-stimulated EGFR intraluminal sorting and degradation. Conversely by binding with the phosphatidylinositol 4,5-bisphosphate, regulates its PIP5K1C interaction, inhibits HGS ubiquitination and relieves LAPTM4B inhibition of EGFR degradation . Recruits SLC3A2 and SLC7A5 (the Leu transporter) to the lysosome, promoting entry of leucine and other essential amino acid (EAA) into the lysosome, stimulating activation of proton-transporting vacuolar (V)-ATPase protein pump (V-ATPase) and hence mTORC1 activation . Plays a role as negative regulator of TGFB1 production in regulatory T cells . Binds ceramide and facilitates its exit from late endosome in order to control cell death pathways .

APPLICATION

To ensure optimal assay performance, AREX recommends conducting reagent titration tailored to each testing system for optimal detection results.

WB	1:500 - 1:2000
----	----------------

*Results are sample-specific. Please refer to your local assay conditions and test parameters for reference.

PRODUCT OVERVIEW

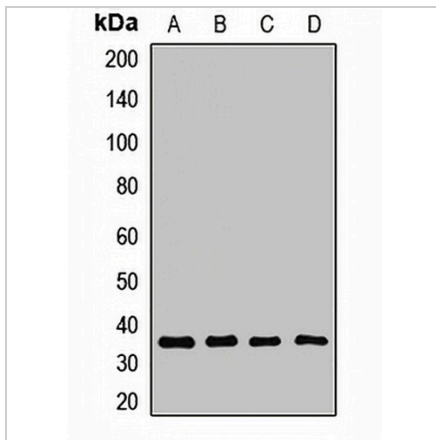
Description	Rabbit polyclonal antibody to LAPTM4B
Specificity	Recognizes endogenous levels of LAPTM4B protein.
Antibody Type	Primary antibody
Immunogen	Recombinant fusion protein of human LAPTM4B
Purification	The antibody was purified by immunogen affinity chromatography.
Molecular Weight	Predicted: 25; Observed: 37 kD
Form/Buffer	Liquid in 0.42% Potassium phosphate, 0.87% Sodium chloride, pH 7.3, 30% glycerol, and 0.01% sodium azide.
Alternative Names	Lysosomal-associated transmembrane protein 4B; Lysosome-associated transmembrane protein 4-beta
Gene Symbol	LAPTM4B
Entrez Gene	55353(Human); 114128(Mouse); 315047(Rat)
SwissProt	Q86VI4(Human); Q91XQ6(Mouse); Q5U1W4(Rat)

*AREX continuously optimizes our products. Webpage content may not reflect the latest updates. For inquiries, please contact info@arexbio.com or your local distributor.

*Clone Number, Reactivity, Source/Host and Clonality can be found in the product name and Key Features section above.

DATASHEET**LAPTM4B Rabbit Polyclonal Antibody**

CAT. NO. APA13982

DATA

Western blot analysis of LAPTM4B expression in Hela (A), A549 (B), mouse brain (C), rat ovary (D) whole cell lysates. (Predicted band size: 25; 35; 41 kD; Observed band size: 37 kD)

STORAGE

Store at 4°C short term. For long term storage, store at -20°C, avoiding freeze/thaw cycles.

NOTE

For Research Use Only. Not for diagnostic, therapeutics, prophylactic or in vivo use.