

**DATASHEET**

**ACSVL1 Rabbit Polyclonal Antibody**

CAT. NO. APA13983

**KEY FEATURES**

Target	ACSVL1	Source / Host	Rabbit
Reactivity	Human, Mouse, Rat	Clonality	Polyclonal
Applications	WB, IHC	Conjugation	Unconjugated
Form / Buffer	Liquid in 0.42% Potassium phosphate, 0.87% Sodium chloride, pH 7.3, 30% glycerol, and 0.01% sodium azide.		Storage at -20°C

**BACKGROUND**

Mediates the import of long-chain fatty acids (LCFA) into the cell by facilitating their transport across cell membranes, playing an important role in hepatic fatty acid uptake into the cell by facilitating their transport across cell membranes, playing an important role in hepatic fatty acid uptake . Also functions as an acyl-CoA ligase catalyzing the ATP-dependent formation of fatty acyl-CoA using LCFA and very-long-chain fatty acids (VLCFA) as substrates, which prevents fatty acid efflux from cells and might drive more fatty acid uptake . Plays a pivotal role in regulating available LCFA substrates from exogenous sources in tissues undergoing high levels of beta-oxidation or triglyceride synthesis .

**APPLICATION**

To ensure optimal assay performance, AREX recommends conducting reagent titration tailored to each testing system for optimal detection results.

WB	1:500 - 1:2000
IHC	1:50 - 1:200

\*Results are sample-specific. Please refer to your local assay conditions and test parameters for reference.

**PRODUCT OVERVIEW**

Description	Rabbit polyclonal antibody to ACSVL1
Specificity	Recognizes endogenous levels of ACSVL1 protein.
Antibody Type	Primary antibody
Immunogen	Recombinant fusion protein of human ACSVL1
Purification	The antibody was purified by immunogen affinity chromatography.
Molecular Weight	Predicted: 64; Observed: 70 kD
Form/Buffer	Liquid in 0.42% Potassium phosphate, 0.87% Sodium chloride, pH 7.3, 30% glycerol, and 0.01% sodium azide.
Alternative Names	ACSVL1; FACVL1; FATP2; VLACS; Very long-chain acyl-CoA synthetase; VLACS; VLCS; Fatty acid transport protein 2; FATP-2; Fatty-acid-coenzyme A ligase, very long-chain 1; Long-chain-fatty-acid--CoA ligase; Solute carrier family 27 member 2; THCA-CoA ligase; Very long-chain-fatty-acid-CoA ligase
Gene Symbol	SLC27A2
Entrez Gene	11001(Human); 26458(Mouse)
SwissProt	O14975(Human); O35488(Mouse)

\*AREX continuously optimizes our products. Webpage content may not reflect the latest updates. For inquiries, please contact [info@arex.bio](mailto:info@arex.bio) or your local distributor.

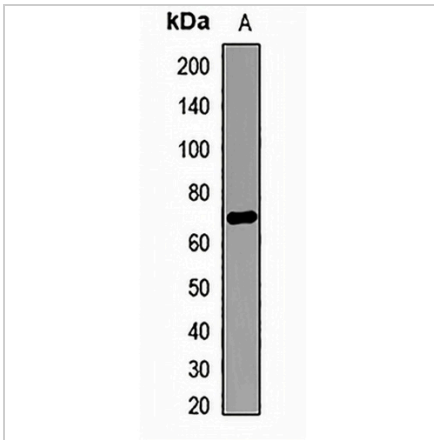
\*Clone Number, Reactivity, Source/Host and Clonality can be found in the product name and Key Features section above.

**DATASHEET**

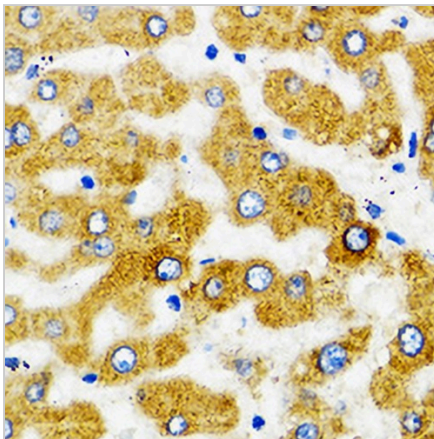
**ACSVL1 Rabbit Polyclonal Antibody**

CAT. NO. APA13983

**DATA**



Western blot analysis of ACSVL1 expression in HepG2 (A) whole cell lysates. (Predicted band size: 64; 70 kD; Observed band size: 70 kD)



Immunohistochemical analysis of ACSVL1 staining in human liver formalin fixed paraffin embedded tissue section. The section was pre-treated using heat mediated antigen retrieval with sodium citrate buffer (pH 6.0). The section was then incubated with the antibody at room temperature and detected using an HRP conjugated compact polymer system. DAB was used as the chromogen. The section was then counterstained with haematoxylin and mounted with DPX.

**STORAGE**

Store at 4°C short term. For long term storage, store at -20°C, avoiding freeze/thaw cycles.

**NOTE**

For Research Use Only. Not for diagnostic, therapeutics, prophylactic or in vivo use.