

DATASHEET

Whirlin Rabbit Polyclonal Antibody

CAT. NO. APA13984

KEY FEATURES

Target	Whirlin	Source / Host	Rabbit
Reactivity	Human, Mouse, Rat	Clonality	Polyclonal
Applications	WB	Conjugation	Unconjugated
Form / Buffer	Liquid in 0.42% Potassium phosphate, 0.87% Sodium chloride, pH 7.3, 30% glycerol, and 0.01% sodium azide.		Storage at -20°C

BACKGROUND

Involved in hearing and vision as member of the USH2 complex. Necessary for elongation and maintenance of inner and outer hair cell stereocilia in the organ of Corti in the inner ear. Involved in the maintenance of the hair bundle ankle region, which connects stereocilia in cochlear hair cells of the inner ear. In retina photoreceptors, required for the maintenance of periciliary membrane complex that seems to play a role in regulating intracellular protein transport.

APPLICATION

To ensure optimal assay performance, AREX recommends conducting reagent titration tailored to each testing system for optimal detection results.

WB	1:500 - 1:2000
----	----------------

*Results are sample-specific. Please refer to your local assay conditions and test parameters for reference.

PRODUCT OVERVIEW

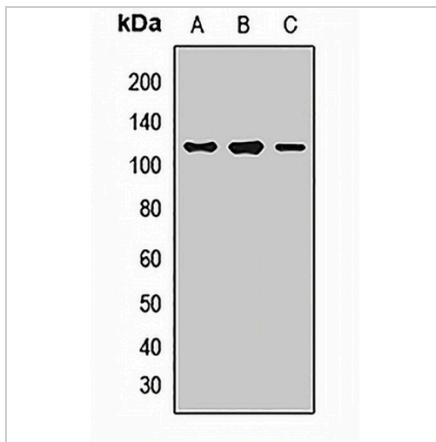
Description	Rabbit polyclonal antibody to Whirlin
Specificity	Recognizes endogenous levels of Whirlin protein.
Antibody Type	Primary antibody
Immunogen	Recombinant fusion protein of human Whirlin
Purification	The antibody was purified by immunogen affinity chromatography.
Molecular Weight	Predicted: 37; Observed: 110 kD
Form/Buffer	Liquid in 0.42% Potassium phosphate, 0.87% Sodium chloride, pH 7.3, 30% glycerol, and 0.01% sodium azide.
Alternative Names	KIAA1526; WHRN; Whirlin; Autosomal recessive deafness type 31 protein
Gene Symbol	DFNB31
Entrez Gene	25861(Human); 73750(Mouse); 313255(Rat)
SwissProt	Q9P202(Human); Q80VW5(Mouse); Q810W9(Rat)

*AREX continuously optimizes our products. Webpage content may not reflect the latest updates. For inquiries, please contact info@arexbio.com or your local distributor.

*Clone Number, Reactivity, Source/Host and Clonality can be found in the product name and Key Features section above.

DATASHEET**Whirlin Rabbit Polyclonal Antibody**

CAT. NO. APA13984

DATA

Western blot analysis of Whirlin expression in HeLa (A), K562 (B), mouse liver (C) whole cell lysates. (Predicted band size: 37; 55; 59; 96 kD; Observed band size: 110 kD)

STORAGE

Store at 4°C short term. For long term storage, store at -20°C, avoiding freeze/thaw cycles.

NOTE

For Research Use Only. Not for diagnostic, therapeutics, prophylactic or in vivo use.