

DATASHEET

MTMR3 Rabbit Polyclonal Antibody

CAT. NO. APA13987

KEY FEATURES

Target	MTMR3	Source / Host	Rabbit
Reactivity	Human, Rat	Clonality	Polyclonal
Applications	WB, IF/ICC	Conjugation	Unconjugated
Form / Buffer	Liquid in 0.42% Potassium phosphate, 0.87% Sodium chloride, pH 7.3, 30% glycerol, and 0.01% sodium azide.		Storage at-20°C

BACKGROUND

Lipid phosphatase that specifically dephosphorylates the D-3 position of phosphatidylinositol 3-phosphate and phosphatidylinositol 3,5-bisphosphate, generating phosphatidylinositol and phosphatidylinositol 5-phosphate . Decreases the levels of phosphatidylinositol 3-phosphate, a phospholipid found in cell membranes where it acts as key regulator of both cell signaling and intracellular membrane traffic . Could also have a molecular sequestering/adaptor activity and regulate biological processes independently of its phosphatase activity. It includes the regulation of midbody abscission during mitotic cytokinesis .

APPLICATION

To ensure optimal assay performance, AREX recommends conducting reagent titration tailored to each testing system for optimal detection results.

WB	1:500 - 1:2000
IF/ICC	1:50 - 1:200

*Results are sample-specific. Please refer to your local assay conditions and test parameters for reference.

PRODUCT OVERVIEW

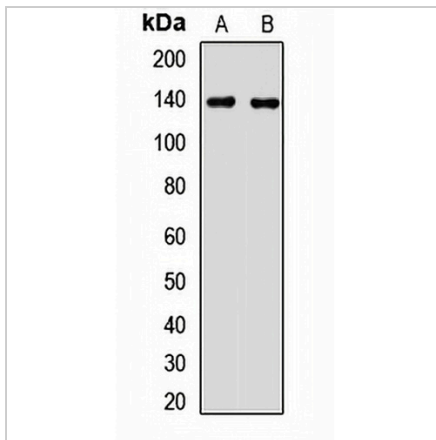
Description	Rabbit polyclonal antibody to MTMR3
Specificity	Recognizes endogenous levels of MTMR3 protein.
Antibody Type	Primary antibody
Immunogen	Recombinant fusion protein of human MTMR3
Purification	The antibody was purified by immunogen affinity chromatography.
Molecular Weight	Predicted: 129; Observed: 134 kD
Form/Buffer	Liquid in 0.42% Potassium phosphate, 0.87% Sodium chloride, pH 7.3, 30% glycerol, and 0.01% sodium azide.
Alternative Names	KIAA0371; ZFYVE10; Myotubularin-related protein 3; FYVE domain-containing dual specificity protein phosphatase 1; FYVE-DSP1; Zinc finger FYVE domain-containing protein 10
Gene Symbol	MTMR3
Entrez Gene	8897(Human)
SwissProt	Q13615(Human)

*AREX continuously optimizes our products. Webpage content may not reflect the latest updates. For inquiries, please contact info@arexbio.com or your local distributor.

*Clone Number, Reactivity, Source/Host and Clonality can be found in the product name and Key Features section above.

DATASHEET**MTMR3 Rabbit Polyclonal Antibody**

CAT. NO. APA13987

DATA

Western blot analysis of MTMR3 expression in HeLa (A), Jurkat (B) whole cell lysates.
(Predicted band size: 129; 130; 133 kD; Observed band size: 134 kD)

STORAGE

Store at 4°C short term. For long term storage, store at -20°C, avoiding freeze/thaw cycles.

NOTE

For Research Use Only. Not for diagnostic, therapeutics, prophylactic or in vivo use.