

DATASHEET

MYT1 Rabbit Polyclonal Antibody

CAT. NO. APA13991

KEY FEATURES

Target	MYT1	Source / Host	Rabbit
Reactivity	Human, Mouse, Rat	Clonality	Polyclonal
Applications	WB	Conjugation	Unconjugated
Form / Buffer	Liquid in 0.42% Potassium phosphate, 0.87% Sodium chloride, pH 7.3, 30% glycerol, and 0.01% sodium azide.		Storage at -20°C

BACKGROUND

Binds to the promoter region of genes encoding proteolipid proteins of the central nervous system. May play a role in the development of neurons and oligodendroglia in the CNS. May regulate a critical transition point in oligodendrocyte lineage development by modulating oligodendrocyte progenitor proliferation relative to terminal differentiation and up-regulation of myelin gene transcription.

APPLICATION

To ensure optimal assay performance, AREX recommends conducting reagent titration tailored to each testing system for optimal detection results.

WB	1:500 - 1:2000
----	----------------

*Results are sample-specific. Please refer to your local assay conditions and test parameters for reference.

PRODUCT OVERVIEW

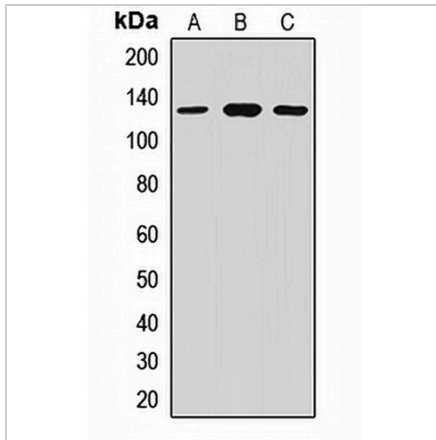
Description	Rabbit polyclonal antibody to MYT1
Specificity	Recognizes endogenous levels of MYT1 protein.
Antibody Type	Primary antibody
Immunogen	Recombinant fusion protein of human MYT1
Purification	The antibody was purified by immunogen affinity chromatography.
Molecular Weight	Predicted: 122; Observed: 122 kD
Form/Buffer	Liquid in 0.42% Potassium phosphate, 0.87% Sodium chloride, pH 7.3, 30% glycerol, and 0.01% sodium azide.
Alternative Names	KIAA0835; KIAA1050; MTF1; MYTI; PLPB1; Myelin transcription factor 1; MyT1; Myelin transcription factor I; MyTI; PLPB1; Proteolipid protein-binding protein
Gene Symbol	MYT1
Entrez Gene	4661(Human); 17932(Mouse)
SwissProt	Q01538(Human); Q8CFC2(Mouse)

*AREX continuously optimizes our products. Webpage content may not reflect the latest updates. For inquiries, please contact info@arexbio.com or your local distributor.

*Clone Number, Reactivity, Source/Host and Clonality can be found in the product name and Key Features section above.

DATASHEET**MYT1 Rabbit Polyclonal Antibody**

CAT. NO. APA13991

DATA

Western blot analysis of MYT1 expression in U87 (A), mouse liver (B), rat kidney (C) whole cell lysates. (Predicted band size: 122; 125 kD; Observed band size: 122 kD)

STORAGE

Store at 4°C short term. For long term storage, store at -20°C, avoiding freeze/thaw cycles.

NOTE

For Research Use Only. Not for diagnostic, therapeutics, prophylactic or in vivo use.