

**DATASHEET**

**MYT1 Rabbit Polyclonal Antibody**

CAT. NO. APA13992

**KEY FEATURES**

Target	MYT1	Source / Host	Rabbit
Reactivity	Human, Mouse, Rat	Clonality	Polyclonal
Applications	WB, IF/ICC	Conjugation	Unconjugated
Form / Buffer	Liquid in 0.42% Potassium phosphate, 0.87% Sodium chloride, pH 7.3, 30% glycerol, and 0.01% sodium azide.		Storage at -20°C

**BACKGROUND**

Binds to the promoter region of genes encoding proteolipid proteins of the central nervous system. May play a role in the development of neurons and oligodendroglia in the CNS. May regulate a critical transition point in oligodendrocyte lineage development by modulating oligodendrocyte progenitor proliferation relative to terminal differentiation and up-regulation of myelin gene transcription.

**APPLICATION**

To ensure optimal assay performance, AREX recommends conducting reagent titration tailored to each testing system for optimal detection results.

WB	1:500 - 1:2000
IF/ICC	1:50 - 1:200

\*Results are sample-specific. Please refer to your local assay conditions and test parameters for reference.

**PRODUCT OVERVIEW**

Description	Rabbit polyclonal antibody to MYT1
Specificity	Recognizes endogenous levels of MYT1 protein.
Antibody Type	Primary antibody
Immunogen	Recombinant fusion protein of human MYT1
Purification	The antibody was purified by immunogen affinity chromatography.
Molecular Weight	Predicted: 223; Observed: 250 kD
Form/Buffer	Liquid in 0.42% Potassium phosphate, 0.87% Sodium chloride, pH 7.3, 30% glycerol, and 0.01% sodium azide.
Alternative Names	KIAA0835; KIAA1050; MTF1; MYTI; PLPB1; Myelin transcription factor 1; MyT1; Myelin transcription factor I; MyTI; PLPB1; Proteolipid protein-binding protein
Gene Symbol	MYT1
Entrez Gene	4661(Human); 17932(Mouse)
SwissProt	Q01538(Human); Q8CFC2(Mouse)

\*AREX continuously optimizes our products. Webpage content may not reflect the latest updates. For inquiries, please contact [info@arexbio.com](mailto:info@arexbio.com) or your local distributor.

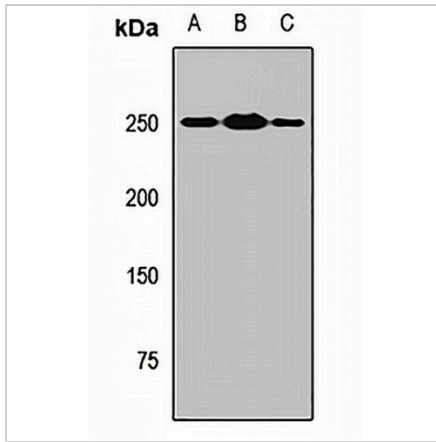
\*Clone Number, Reactivity, Source/Host and Clonality can be found in the product name and Key Features section above.

**DATASHEET**

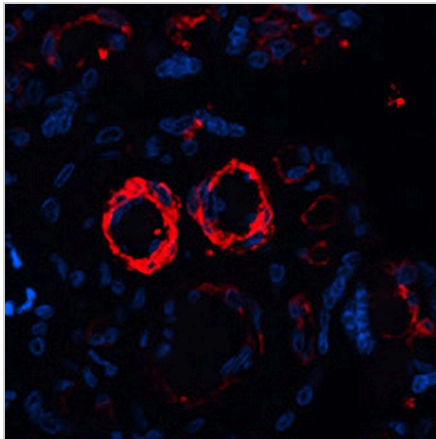
**MYT1 Rabbit Polyclonal Antibody**

CAT. NO. APA13992

**DATA**



Western blot analysis of MYT1 expression in A375 (A), mouse brain (B), rat liver (C) whole cell lysates. (Predicted band size: 223; 224; 227; 228 kD; Observed band size: 250 kD)



Immunofluorescent analysis of MYT1 staining in human placenta. Formalin-fixed cells were permeabilized with 0.1% Triton X-100 in TBS for 5-10 minutes and blocked with 3% BSA-PBS for 30 minutes at room temperature. Cells were probed with the primary antibody in 3% BSA-PBS and incubated overnight at 4 °C in a humidified chamber. Cells were washed with PBST and incubated with a AREX® Fluor 594-conjugated secondary antibody (red) in PBS at room temperature in the dark. DAPI was used to stain the cell nuclei (blue).

**STORAGE**

Store at 4°C short term. For long term storage, store at -20°C, avoiding freeze/thaw cycles.

**NOTE**

For Research Use Only. Not for diagnostic, therapeutics, prophylactic or in vivo use.