

## DATASHEET

# RNase 11 Rabbit Polyclonal Antibody

CAT. NO. APA13993

### KEY FEATURES

Target	RNase 11	Source / Host	Rabbit
Reactivity	Human	Clonality	Polyclonal
Applications	WB	Conjugation	Unconjugated
Form / Buffer	Liquid in 0.42% Potassium phosphate, 0.87% Sodium chloride, pH 7.3, 30% glycerol, and 0.01% sodium azide.		Storage at -20°C

### BACKGROUND

Putative inactive ribonuclease 11 (RNASE11). Belongs to the pancreatic ribonuclease family Subcellular location: Secreted

### APPLICATION

To ensure optimal assay performance, AREX recommends conducting reagent titration tailored to each testing system for optimal detection results.

WB	1:500 - 1:1000
----	----------------

\*Results are sample-specific. Please refer to your local assay conditions and test parameters for reference.

### PRODUCT OVERVIEW

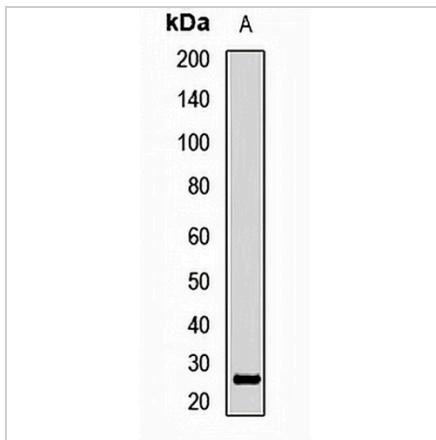
Description	Rabbit polyclonal antibody to RNase 11
Specificity	Recognizes endogenous levels of RNase 11 protein.
Antibody Type	Primary antibody
Immunogen	Recombinant fusion protein of human RNase 11
Purification	The antibody was purified by immunogen affinity chromatography.
Molecular Weight	Predicted: 22 kD; Observed: 25 kD
Form/Buffer	Liquid in 0.42% Potassium phosphate, 0.87% Sodium chloride, pH 7.3, 30% glycerol, and 0.01% sodium azide.
Alternative Names	C14orf6; Probable ribonuclease 11; RNase 11
Gene Symbol	RNASE11
Entrez Gene	122651(Human); 497113(Mouse)
SwissProt	Q8TAA1(Human); Q5GAM9(Mouse)

\*AREX continuously optimizes our products. Webpage content may not reflect the latest updates. For inquiries, please contact [info@arexbio.com](mailto:info@arexbio.com) or your local distributor.

\*Clone Number, Reactivity, Source/Host and Clonality can be found in the product name and Key Features section above.

**DATASHEET****RNase 11 Rabbit Polyclonal Antibody**

CAT. NO. APA13993

**DATA**

Western blot analysis of RNase 11 expression in MCF7 (A) whole cell lysates. (Predicted band size: 22 kD; Observed band size: 25 kD)

**STORAGE**

Store at 4°C short term. For long term storage, store at -20°C, avoiding freeze/thaw cycles.

**NOTE**

For Research Use Only. Not for diagnostic, therapeutics, prophylactic or in vivo use.