

## DATASHEET

# BDNF Rabbit Polyclonal Antibody

CAT. NO. APA13994

### KEY FEATURES

Target	BDNF	Source / Host	Rabbit
Reactivity	Human, Mouse, Rat	Clonality	Polyclonal
Applications	WB, IF/ICC	Conjugation	Unconjugated
Form / Buffer	Liquid in 0.42% Potassium phosphate, 0.87% Sodium chloride, pH 7.3, 30% glycerol, and 0.01% sodium azide.		Storage at -20°C

### BACKGROUND

Important signaling molecule that activates signaling cascades downstream of NTRK2. During development, promotes the survival and differentiation of selected neuronal populations of the peripheral and central nervous systems. Participates in axonal growth, pathfinding and in the modulation of dendritic growth and morphology. Major regulator of synaptic transmission and plasticity at adult synapses in many regions of the CNS. The versatility of BDNF is emphasized by its contribution to a range of adaptive neuronal responses including long-term potentiation (LTP), long-term depression (LTD), certain forms of short-term synaptic plasticity, as well as homeostatic regulation of intrinsic neuronal excitability.

### APPLICATION

To ensure optimal assay performance, AREX recommends conducting reagent titration tailored to each testing system for optimal detection results.

WB	1:500 - 1:2000
IF/ICC	1:50 - 1:200

\*Results are sample-specific. Please refer to your local assay conditions and test parameters for reference.

### PRODUCT OVERVIEW

Description	Rabbit polyclonal antibody to BDNF
Specificity	Recognizes endogenous levels of BDNF protein.
Antibody Type	Primary antibody
Immunogen	Recombinant fusion protein of human BDNF
Purification	The antibody was purified by immunogen affinity chromatography.
Molecular Weight	Predicted: 27; Observed: 15; 35 kD
Form/Buffer	Liquid in 0.42% Potassium phosphate, 0.87% Sodium chloride, pH 7.3, 30% glycerol, and 0.01% sodium azide.
Alternative Names	Brain-derived neurotrophic factor; BDNF; Abrineurin
Gene Symbol	BDNF
Entrez Gene	627(Human); 12064(Mouse); 24225(Rat)
SwissProt	P23560(Human); P21237(Mouse); P23363(Rat)

\*AREX continuously optimizes our products. Webpage content may not reflect the latest updates. For inquiries, please contact [info@arexbio.com](mailto:info@arexbio.com) or your local distributor.

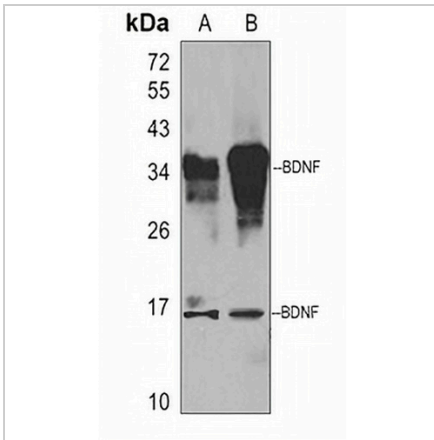
\*Clone Number, Reactivity, Source/Host and Clonality can be found in the product name and Key Features section above.

**DATASHEET**

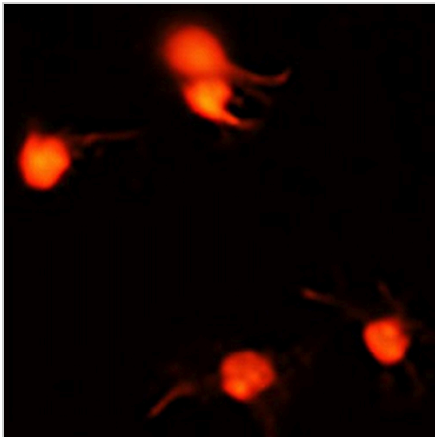
**BDNF Rabbit Polyclonal Antibody**

CAT. NO. APA13994

**DATA**



Western blot analysis of BDNF expression in A549 (A), mouse kidney (B) whole cell lysates. (Predicted band size: 27; 28; 29; 31; 37 kD; Observed band size: 15; 35 kD)



Immunofluorescent analysis of BDNF staining in U251MG cells. Formalin-fixed cells were permeabilized with 0.1% Triton X-100 in TBS for 5-10 minutes and blocked with 3% BSA-PBS for 30 minutes at room temperature. Cells were probed with the primary antibody in 3% BSA-PBS and incubated overnight at 4 °C in a humidified chamber. Cells were washed with PBST and incubated with a AREX® Fluor 594-conjugated secondary antibody (red) in PBS at room temperature in the dark. DAPI was used to stain the cell nuclei (blue).

**STORAGE**

Store at 4°C short term. For long term storage, store at -20°C, avoiding freeze/thaw cycles.

**NOTE**

For Research Use Only. Not for diagnostic, therapeutics, prophylactic or in vivo use.