

DATASHEET

MAD1 Rabbit Polyclonal Antibody

CAT. NO. APA14010

KEY FEATURES

Target	MAD1	Source / Host	Rabbit
Reactivity	Human, Mouse, Rat	Clonality	Polyclonal
Applications	WB, IF/ICC	Conjugation	Unconjugated
Form / Buffer	Liquid in 0.42% Potassium phosphate, 0.87% Sodium chloride, pH 7.3, 30% glycerol, and 0.01% sodium azide.		Storage at -20°C

BACKGROUND

Component of the spindle-assembly checkpoint that prevents the onset of anaphase until all chromosomes are properly aligned at the metaphase plate . Forms a heterotetrameric complex with the closed conformation form of MAD2L1 (C-MAD2) at unattached kinetochores during prometaphase, recruits an open conformation of MAD2L1 (O-MAD2) and promotes the conversion of O-MAD2 to C-MAD2, which ensures mitotic checkpoint signaling .

APPLICATION

To ensure optimal assay performance, AREX recommends conducting reagent titration tailored to each testing system for optimal detection results.

WB	1:500 - 1:1000
IF/ICC	1:50 - 1:200

*Results are sample-specific. Please refer to your local assay conditions and test parameters for reference.

PRODUCT OVERVIEW

Description	Rabbit polyclonal antibody to MAD1
Specificity	Recognizes endogenous levels of MAD1 protein.
Antibody Type	Primary antibody
Immunogen	Recombinant fusion protein of human MAD1
Purification	The antibody was purified by immunogen affinity chromatography.
Molecular Weight	Predicted: 72; Observed: 95 kD
Form/Buffer	Liquid in 0.42% Potassium phosphate, 0.87% Sodium chloride, pH 7.3, 30% glycerol, and 0.01% sodium azide.
Alternative Names	MAD1; TXBP181; Mitotic spindle assembly checkpoint protein MAD1; Mitotic arrest deficient 1-like protein 1; MAD1-like protein 1; Mitotic checkpoint MAD1 protein homolog; HsMAD1; hMAD1; Tax-binding protein 181
Gene Symbol	MAD1L1
Entrez Gene	8379(Human); 17120(Mouse)
SwissProt	Q9Y6D9(Human); Q9WTX8(Mouse)

*AREX continuously optimizes our products. Webpage content may not reflect the latest updates. For inquiries, please contact info@arexbio.com or your local distributor.

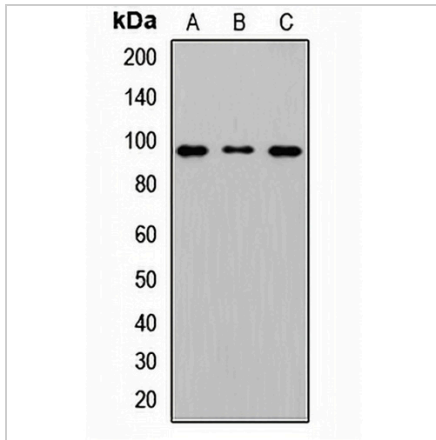
*Clone Number, Reactivity, Source/Host and Clonality can be found in the product name and Key Features section above.

DATASHEET

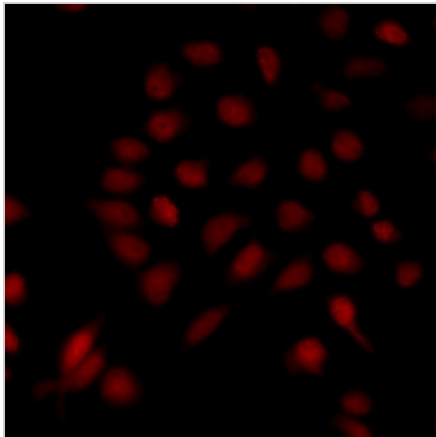
MAD1 Rabbit Polyclonal Antibody

CAT. NO. APA14010

DATA



Western blot analysis of MAD1 expression in HeLa (A), HepG2 (B), MCF7 (C) whole cell lysates. (Predicted band size: 72; 83 kD; Observed band size: 95 kD)



Immunofluorescent analysis of MAD1 staining in HeLa cells. Formalin-fixed cells were permeabilized with 0.1% Triton X-100 in TBS for 5-10 minutes and blocked with 3% BSA-PBS for 30 minutes at room temperature. Cells were probed with the primary antibody in 3% BSA-PBS and incubated overnight at 4 °C in a humidified chamber. Cells were washed with PBST and incubated with a DyLight 594-conjugated secondary antibody (red) in PBS at room temperature in the dark.

STORAGE

Store at 4°C short term. For long term storage, store at -20°C, avoiding freeze/thaw cycles.

NOTE

For Research Use Only. Not for diagnostic, therapeutics, prophylactic or in vivo use.