

## DATASHEET

# HEPACAM Rabbit Polyclonal Antibody

CAT. NO. APA14012

### KEY FEATURES

Target	HEPACAM	Source / Host	Rabbit
Reactivity	Human, Mouse, Rat	Clonality	Polyclonal
Applications	WB	Conjugation	Unconjugated
Form / Buffer	Liquid in 0.42% Potassium phosphate, 0.87% Sodium chloride, pH 7.3, 30% glycerol, and 0.01% sodium azide.		Storage at-20°C

### BACKGROUND

Involved in regulating cell motility and cell-matrix interactions. May inhibit cell growth through suppression of cell proliferation . In glia, associates and targets CLCN2 at astrocytic processes and myelinated fiber tracts where it may regulate transcellular chloride flux involved in neuron excitability .

### APPLICATION

To ensure optimal assay performance, AREX recommends conducting reagent titration tailored to each testing system for optimal detection results.

WB	1:500 - 1:2000
----	----------------

\*Results are sample-specific. Please refer to your local assay conditions and test parameters for reference.

### PRODUCT OVERVIEW

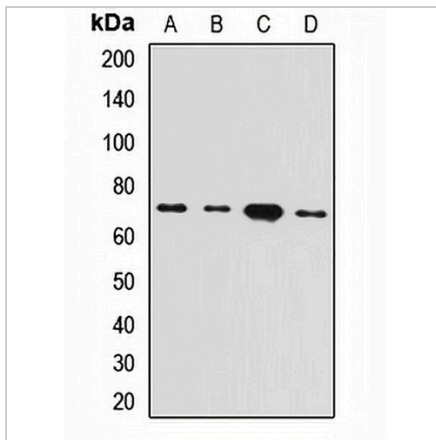
Description	Rabbit polyclonal antibody to HEPACAM
Specificity	Recognizes endogenous levels of HEPACAM protein.
Antibody Type	Primary antibody
Immunogen	Recombinant fusion protein of human HEPACAM
Purification	The antibody was purified by immunogen affinity chromatography.
Molecular Weight	Predicted: 40; Observed: 70 kD
Form/Buffer	Liquid in 0.42% Potassium phosphate, 0.87% Sodium chloride, pH 7.3, 30% glycerol, and 0.01% sodium azide.
Alternative Names	Hepatocyte cell adhesion molecule; Protein hepaCAM
Gene Symbol	HEPACAM
Entrez Gene	220296(Human); 72927(Mouse)
SwissProt	Q14CZ8(Human); Q640R3(Mouse)

\*AREX continuously optimizes our products. Webpage content may not reflect the latest updates. For inquiries, please contact [info@arexbio.com](mailto:info@arexbio.com) or your local distributor.

\*Clone Number, Reactivity, Source/Host and Clonality can be found in the product name and Key Features section above.

**DATASHEET****HEPACAM Rabbit Polyclonal Antibody**

CAT. NO. APA14012

**DATA**

Western blot analysis of HEPACAM expression in HepG2 (A), MCF7 (B), mouse brain (C), rat liver (D) whole cell lysates. (Predicted band size: 40; 46 kD; Observed band size: 70 kD)

**STORAGE**

Store at 4°C short term. For long term storage, store at -20°C, avoiding freeze/thaw cycles.

**NOTE**

For Research Use Only. Not for diagnostic, therapeutics, prophylactic or in vivo use.