

DATASHEET

ICT1 Rabbit Polyclonal Antibody

CAT. NO. APA14013

KEY FEATURES

Target	ICT1	Source / Host	Rabbit
Reactivity	Human, Mouse	Clonality	Polyclonal
Applications	WB, IHC	Conjugation	Unconjugated
Form / Buffer	Liquid in 0.42% Potassium phosphate, 0.87% Sodium chloride, pH 7.3, 30% glycerol, and 0.01% sodium azide.		Storage at-20°C

BACKGROUND

Essential peptidyl-tRNA hydrolase component of the mitochondrial large ribosomal subunit . Acts as a codon-independent translation release factor that has lost all stop codon specificity and directs the termination of translation in mitochondrion, possibly in case of abortive elongation . Involved in the hydrolysis of peptidyl-tRNAs that have been prematurely terminated and thus in the recycling of stalled mitochondrial ribosomes .

APPLICATION

To ensure optimal assay performance, AREX recommends conducting reagent titration tailored to each testing system for optimal detection results.

WB	1:500 - 1:2000
IHC	1:50 - 1:200

*Results are sample-specific. Please refer to your local assay conditions and test parameters for reference.

PRODUCT OVERVIEW

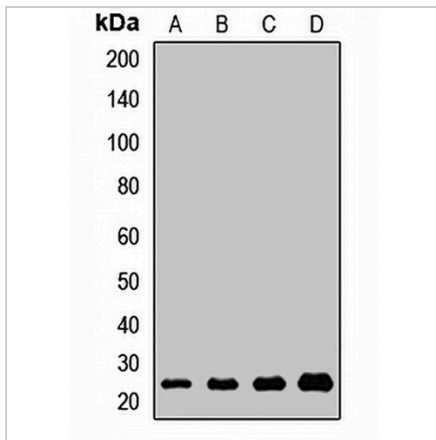
Description	Rabbit polyclonal antibody to ICT1
Specificity	Recognizes endogenous levels of ICT1 protein.
Antibody Type	Primary antibody
Immunogen	Recombinant fusion protein of human ICT1
Purification	The antibody was purified by immunogen affinity chromatography.
Molecular Weight	Predicted: 23 kD; Observed: 24 kD
Form/Buffer	Liquid in 0.42% Potassium phosphate, 0.87% Sodium chloride, pH 7.3, 30% glycerol, and 0.01% sodium azide.
Alternative Names	DS1; Peptidyl-tRNA hydrolase ICT1 mitochondrial; 39S ribosomal protein L58 mitochondrial; MRP-L58; Digestion substraction 1; DS-1; Immature colon carcinoma transcript 1 protein
Gene Symbol	ICT1
Entrez Gene	3396(Human); 68572(Mouse)
SwissProt	Q14197(Human); Q8R035(Mouse)

*AREX continuously optimizes our products. Webpage content may not reflect the latest updates. For inquiries, please contact info@arexbio.com or your local distributor.

*Clone Number, Reactivity, Source/Host and Clonality can be found in the product name and Key Features section above.

DATASHEET**ICT1 Rabbit Polyclonal Antibody**

CAT. NO. APA14013

DATA

Western blot analysis of ICT1 expression in HT29 (A), SKOV3 (B), mouse lung (C), mouse brain (D) whole cell lysates. (Predicted band size: 23 kD; Observed band size: 24 kD)

STORAGE

Store at 4°C short term. For long term storage, store at -20°C, avoiding freeze/thaw cycles.

NOTE

For Research Use Only. Not for diagnostic, therapeutics, prophylactic or in vivo use.