

DATASHEET

MAT2B Rabbit Polyclonal Antibody

CAT. NO. APA14016

KEY FEATURES

Target	MAT2B	Source / Host	Rabbit
Reactivity	Human, Mouse, Rat	Clonality	Polyclonal
Applications	WB	Conjugation	Unconjugated
Form / Buffer	Liquid in 0.42% Potassium phosphate, 0.87% Sodium chloride, pH 7.3, 30% glycerol, and 0.01% sodium azide.		Storage at -20°C

BACKGROUND

Regulatory subunit of S-adenosylmethionine synthetase 2, an enzyme that catalyzes the formation of S-adenosylmethionine from methionine and ATP. Regulates MAT2A catalytic activity by changing its kinetic properties, increasing its affinity for L-methionine. Can bind NADP (in vitro).

APPLICATION

To ensure optimal assay performance, AREX recommends conducting reagent titration tailored to each testing system for optimal detection results.

WB	1:500 - 1:2000
----	----------------

*Results are sample-specific. Please refer to your local assay conditions and test parameters for reference.

PRODUCT OVERVIEW

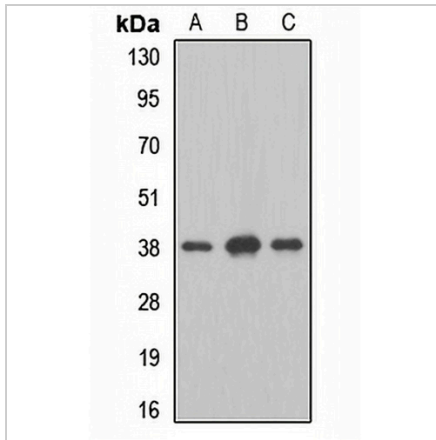
Description	Rabbit polyclonal antibody to MAT2B
Specificity	Recognizes endogenous levels of MAT2B protein.
Antibody Type	Primary antibody
Immunogen	Recombinant fusion protein of human MAT2B
Purification	The antibody was purified by immunogen affinity chromatography.
Molecular Weight	Predicted: 9; Observed: 37 kD
Form/Buffer	Liquid in 0.42% Potassium phosphate, 0.87% Sodium chloride, pH 7.3, 30% glycerol, and 0.01% sodium azide.
Alternative Names	TGR; Methionine adenosyltransferase 2 subunit beta; Methionine adenosyltransferase II beta; MAT II beta; Putative dTDP-4-keto-6-deoxy-D-glucose 4-reductase
Gene Symbol	MAT2B
Entrez Gene	27430(Human); 108645(Mouse); 683630(Rat)
SwissProt	Q9NZL9(Human); Q99LB6(Mouse); Q5U2R0(Rat)

*AREX continuously optimizes our products. Webpage content may not reflect the latest updates. For inquiries, please contact info@arexbio.com or your local distributor.

*Clone Number, Reactivity, Source/Host and Clonality can be found in the product name and Key Features section above.

DATASHEET**MAT2B Rabbit Polyclonal Antibody**

CAT. NO. APA14016

DATA

Western blot analysis of MAT2B expression in HeLa (A), mouse brain (B), mouse kidney (C) whole cell lysates. (Predicted band size: 9; 28; 34; 36; 37 kD; Observed band size: 37 kD)

STORAGE

Store at 4°C short term. For long term storage, store at -20°C, avoiding freeze/thaw cycles.

NOTE

For Research Use Only. Not for diagnostic, therapeutics, prophylactic or in vivo use.