

**DATASHEET**

**MC3 Receptor Rabbit Polyclonal Antibody**

CAT. NO. APA14017

**KEY FEATURES**

Target	MC3 Receptor	Source / Host	Rabbit
Reactivity	Human, Mouse, Rat	Clonality	Polyclonal
Applications	WB	Conjugation	Unconjugated
Form / Buffer	Liquid in 0.42% Potassium phosphate, 0.87% Sodium chloride, pH 7.3, 30% glycerol, and 0.01% sodium azide.		Storage at -20°C

**BACKGROUND**

G protein-coupled receptor for melanocyte-stimulating hormones (alpha, beta, and gamma-MSH) and corticotropin/ACTH, which are peptide products of the POMC precursor and corticotropin/ACTH, which are peptide products of the POMC precursor . Upon activation, couples to G(s) protein, stimulating adenylate cyclase and the cAMP-dependent signaling pathway, which contributes to the regulation of energy homeostasis . Required for expression of anticipatory patterns of activity and wakefulness during periods of limited nutrient availability and for the normal regulation of circadian clock activity in the brain . Binding of the Agouti-related protein/AGPR antagonist precludes alpha-MSH-induced signaling, blocking cAMP production .

**APPLICATION**

To ensure optimal assay performance, AREX recommends conducting reagent titration tailored to each testing system for optimal detection results.

WB	1:500 - 1:2000
----	----------------

\*Results are sample-specific. Please refer to your local assay conditions and test parameters for reference.

**PRODUCT OVERVIEW**

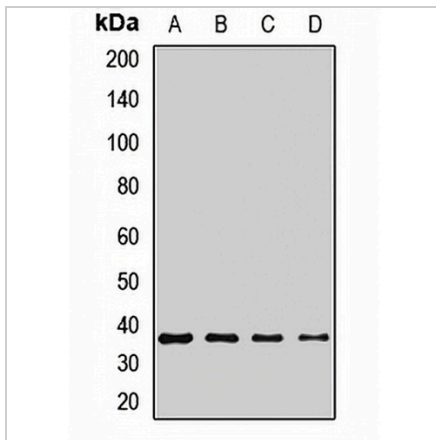
Description	Rabbit polyclonal antibody to MC3 Receptor
Specificity	Recognizes endogenous levels of MC3 Receptor protein.
Antibody Type	Primary antibody
Immunogen	Recombinant fusion protein of human MC3 Receptor
Purification	The antibody was purified by immunogen affinity chromatography.
Molecular Weight	Predicted: 36 kD; Observed: 36 kD
Form/Buffer	Liquid in 0.42% Potassium phosphate, 0.87% Sodium chloride, pH 7.3, 30% glycerol, and 0.01% sodium azide.
Alternative Names	Melanocortin receptor 3; MC3-R
Gene Symbol	MC3R
Entrez Gene	4159(Human); 17201(Mouse); 29310(Rat)
SwissProt	P41968(Human); P33033(Mouse); P32244(Rat)

\*AREX continuously optimizes our products. Webpage content may not reflect the latest updates. For inquiries, please contact [info@arexbio.com](mailto:info@arexbio.com) or your local distributor.

\*Clone Number, Reactivity, Source/Host and Clonality can be found in the product name and Key Features section above.

**DATASHEET****MC3 Receptor Rabbit Polyclonal Antibody**

CAT. NO. APA14017

**DATA**

Western blot analysis of MC3 Receptor expression in mouse brain (A), mouse liver (B), mouse kidney (C), rat brain (D) whole cell lysates. (Predicted band size: 36 kD; Observed band size: 36 kD)

**STORAGE**

Store at 4°C short term. For long term storage, store at -20°C, avoiding freeze/thaw cycles.

**NOTE**

For Research Use Only. Not for diagnostic, therapeutics, prophylactic or in vivo use.