

DATASHEET

SEC13 Rabbit Polyclonal Antibody

CAT. NO. APA14018

KEY FEATURES

Target	SEC13	Source / Host	Rabbit
Reactivity	Human, Mouse, Rat	Clonality	Polyclonal
Applications	WB	Conjugation	Unconjugated
Form / Buffer	Liquid in 0.42% Potassium phosphate, 0.87% Sodium chloride, pH 7.3, 30% glycerol, and 0.01% sodium azide.		Storage at -20°C

BACKGROUND

Functions as a component of the nuclear pore complex (NPC) and the COPII coat and the COPII coat . At the endoplasmic reticulum, SEC13 is involved in the biogenesis of COPII-coated vesicles . Required for the exit of adipsin (CFD/ADN), an adipocyte-secreted protein from the endoplasmic reticulum .

APPLICATION

To ensure optimal assay performance, AREX recommends conducting reagent titration tailored to each testing system for optimal detection results.

WB	1:500 - 1:2000
----	----------------

*Results are sample-specific. Please refer to your local assay conditions and test parameters for reference.

PRODUCT OVERVIEW

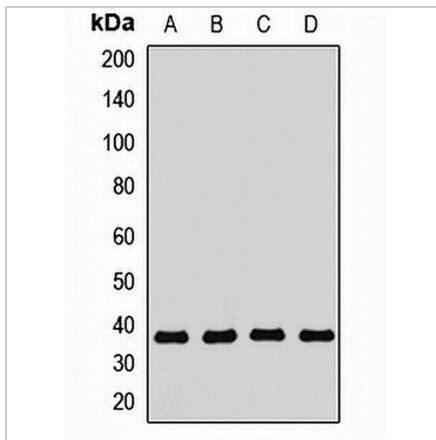
Description	Rabbit polyclonal antibody to SEC13
Specificity	Recognizes endogenous levels of SEC13 protein.
Antibody Type	Primary antibody
Immunogen	Recombinant fusion protein of human SEC13
Purification	The antibody was purified by immunogen affinity chromatography.
Molecular Weight	Predicted: 34; Observed: 38 kD
Form/Buffer	Liquid in 0.42% Potassium phosphate, 0.87% Sodium chloride, pH 7.3, 30% glycerol, and 0.01% sodium azide.
Alternative Names	D3S1231E; SEC13L1; SEC13R; Protein SEC13 homolog; SEC13-like protein 1; SEC13-related protein
Gene Symbol	SEC13
Entrez Gene	6396(Human); 110379(Mouse); 297522(Rat)
SwissProt	P55735(Human); Q9D1M0(Mouse); Q5XFW8(Rat)

*AREX continuously optimizes our products. Webpage content may not reflect the latest updates. For inquiries, please contact info@arexbio.com or your local distributor.

*Clone Number, Reactivity, Source/Host and Clonality can be found in the product name and Key Features section above.

DATASHEET**SEC13 Rabbit Polyclonal Antibody**

CAT. NO. APA14018

DATA

Western blot analysis of SEC13 expression in Hela (A), HT29 (B), mouse liver (C), rat ovary (D) whole cell lysates. (Predicted band size: 34; 35; 40 kD; Observed band size: 38 kD)

STORAGE

Store at 4°C short term. For long term storage, store at -20°C, avoiding freeze/thaw cycles.

NOTE

For Research Use Only. Not for diagnostic, therapeutics, prophylactic or in vivo use.