

DATASHEET

CHMP1A Rabbit Polyclonal Antibody

CAT. NO. APA14019

KEY FEATURES

Target	CHMP1A	Source / Host	Rabbit
Reactivity	Human, Mouse	Clonality	Polyclonal
Applications	WB	Conjugation	Unconjugated
Form / Buffer	Liquid in 0.42% Potassium phosphate, 0.87% Sodium chloride, pH 7.3, 30% glycerol, and 0.01% sodium azide.		Storage at-20°C

BACKGROUND

Probable peripherally associated component of the endosomal sorting required for transport complex III (ESCRT-III) which is involved in multivesicular bodies (MVBs) formation and sorting of endosomal cargo proteins into MVBs. MVBs contain intraluminal vesicles (ILVs) that are generated by invagination and scission from the limiting membrane of the endosome and mostly are delivered to lysosomes enabling degradation of membrane proteins, such as stimulated growth factor receptors, lysosomal enzymes and lipids. The MVB pathway appears to require the sequential function of ESCRT-O, -I, -II and -III complexes. ESCRT-III proteins mostly dissociate from the invaginating membrane before the ILV is released.

APPLICATION

To ensure optimal assay performance, AREX recommends conducting reagent titration tailored to each testing system for optimal detection results.

WB	1:500 - 1:2000
----	----------------

*Results are sample-specific. Please refer to your local assay conditions and test parameters for reference.

PRODUCT OVERVIEW

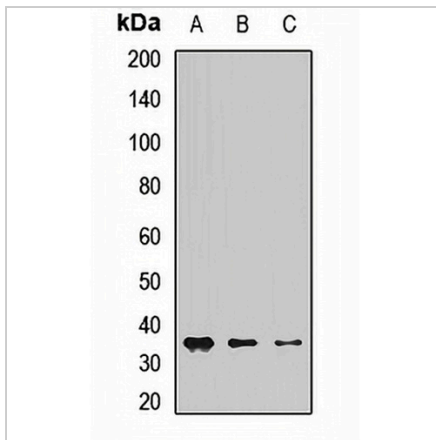
Description	Rabbit polyclonal antibody to CHMP1A
Specificity	Recognizes endogenous levels of CHMP1A protein.
Antibody Type	Primary antibody
Immunogen	Recombinant fusion protein of human CHMP1A
Purification	The antibody was purified by immunogen affinity chromatography.
Molecular Weight	Predicted: 7; Observed: 35 kD
Form/Buffer	Liquid in 0.42% Potassium phosphate, 0.87% Sodium chloride, pH 7.3, 30% glycerol, and 0.01% sodium azide.
Alternative Names	CHMP1; KIAA0047; PCOLN3; PRSM1; Charged multivesicular body protein 1a; Chromatin-modifying protein 1a; CHMP1a; Vacuolar protein sorting-associated protein 46-1; Vps46-1; hVps46-1
Gene Symbol	CHMP1A
Entrez Gene	5119(Human); 234852(Mouse)
SwissProt	Q9HD42(Human); Q921W0(Mouse)

*AREX continuously optimizes our products. Webpage content may not reflect the latest updates. For inquiries, please contact info@arexbio.com or your local distributor.

*Clone Number, Reactivity, Source/Host and Clonality can be found in the product name and Key Features section above.

DATASHEET**CHMP1A Rabbit Polyclonal Antibody**

CAT. NO. APA14019

DATA

Western blot analysis of CHMP1A expression in HT29 (A), mouse heart (B), mouse kidney (C) whole cell lysates. (Predicted band size: 7; 21 kD; Observed band size: 35 kD)

STORAGE

Store at 4°C short term. For long term storage, store at -20°C, avoiding freeze/thaw cycles.

NOTE

For Research Use Only. Not for diagnostic, therapeutics, prophylactic or in vivo use.